



EBARA

BSP SS - Submersible Pump

Product Catalogue

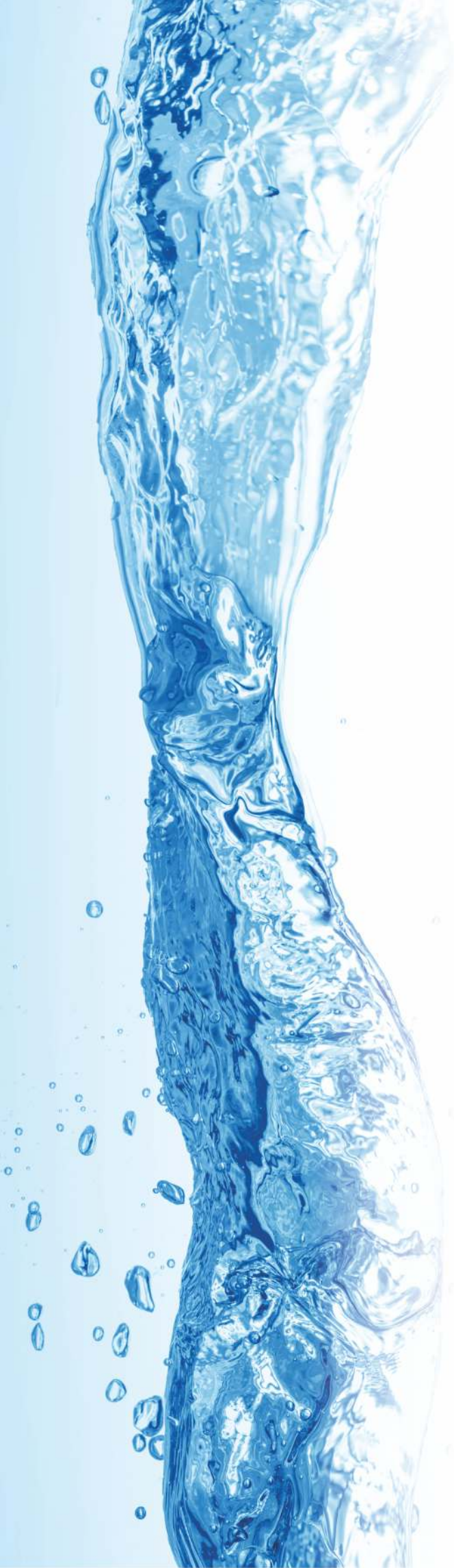


60
Hertz



SS SUBMERSIBLE PUMP
STAINLESS STEEL





SS SUBMERSIBLE PUMPS STAINLESS STEEL



General Features

- Long life, high durability, high efficiency,
- Easy installation and service operation
- Suitable connection in NEMA standards
- Complete stainless steel (AISI304L - AISI316L Opt.)
- Maximum allowable sand content 50 g/m³
- NSF/ANSI/CAN 61certificated (Optional)
- Hydrostatic pressure test (Optional)
- Tandem application (Optional)

Applications

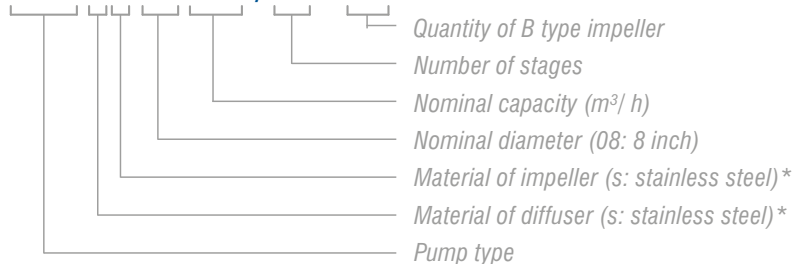
- Water supply from borehole wells
- Agricultural irrigation
- Industrial applications
- Mining, Fountains
- Pressure boosting



A product of superior engineering, Ebara Stainless Steel Submersible Pumps are designed to more work with less energy and higher efficiency. They provide a long life and a stable performance with their superior material and production characteristics. Their reliable design reduces the lifetime cost (life cycle cost) and allows them to run economically.

PRODUCT CODE SYSTEM

BSP SS 08125 / 07 . B2



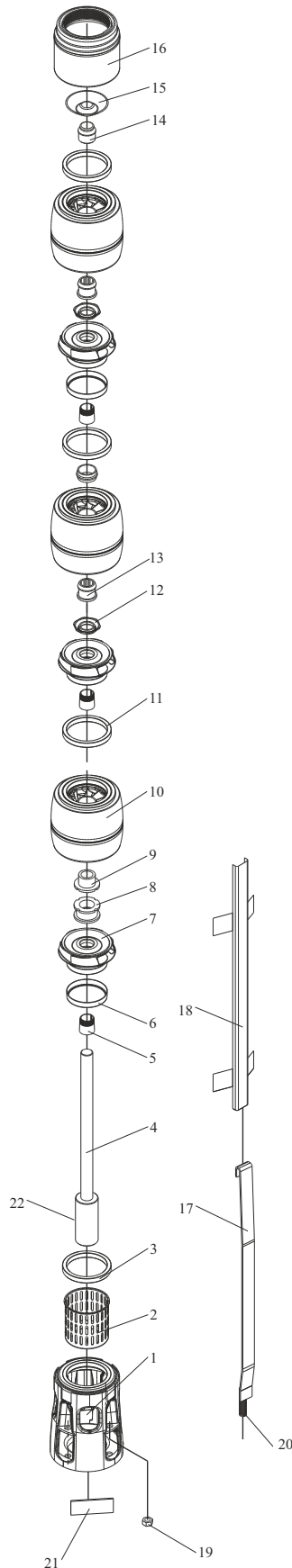
*For pumps in accordance with ANSI316 design, the Product Code is BSP SSL

SS SUBMERSIBLE PUMPS

STAINLESS STEEL



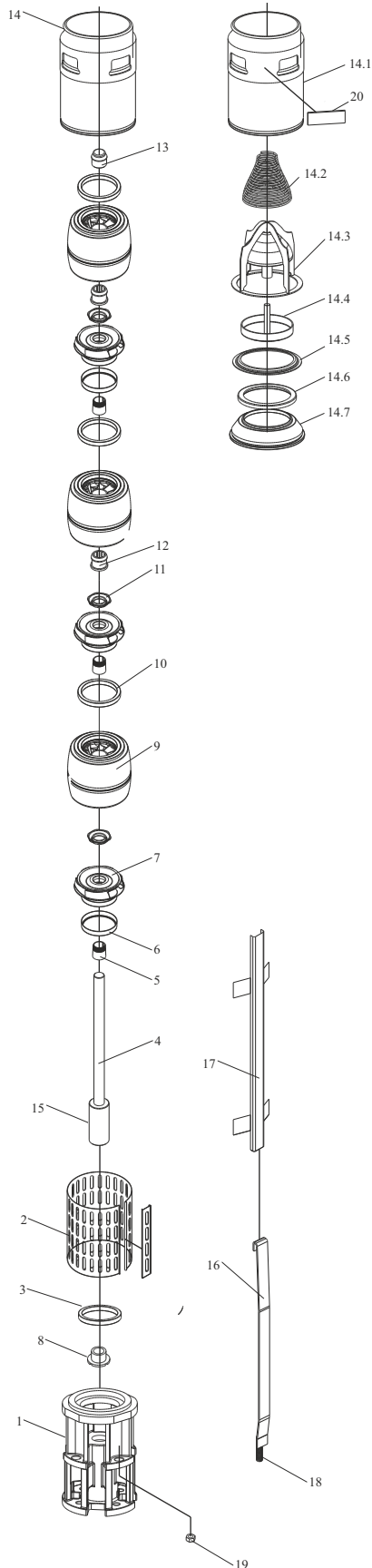
PART & MATERIALS (10...60 m³)



Nr	PART NAME	MATERIAL
1	Suction Case	Stainless Steel (AISI 304L)
2	Strainer	Stainless Steel (AISI 304L)
3	Suction Case Wear Ring	Bronze (ASTM B145-4A)*AISI 304 + EPDM
4	Pump Shaft	Stainless Steel (AISI 431)
5	Collet	Stainless Steel (AISI 304)
6	Impeller Wear Ring	Stainless Steel (AISI 304L)
7	Impeller	Stainless Steel (AISI 304L)
8	Nut For Stop Ring	Stainless Steel (AISI 304)
9	Stop Ring	Bronze (ASTM B145-4A)
10	Diffuser	Stainless Steel (AISI 304L)
11	Diffuser Wear Ring	EPDM
12	Nut For Collet	Stainless Steel (AISI 304L)
13	Rubber Bearing	EPDM
14	Upper Bearing	Bronze (ASTM B145-4A)
15	Valve Cup	Stainless Steel (AISI 304L)
16	Discharge Case	Stainless Steel (AISI 304L)
17	Tie Rod	Stainless Steel (AISI 304L)
18	Cable Guard	Stainless Steel (AISI 304L)
19	Tie Rod Nut	Stainless Steel (AISI 304)
20	Tie Rod Stud	Stainless Steel (AISI 316)
21	Name Plate	Stainless Steel (AISI 304L)
22	Coupling	Stainless Steel (AISI 431)

*Only used for models BSP SS 06010/06017/06030

PART & MATERIALS (75...215 m³)



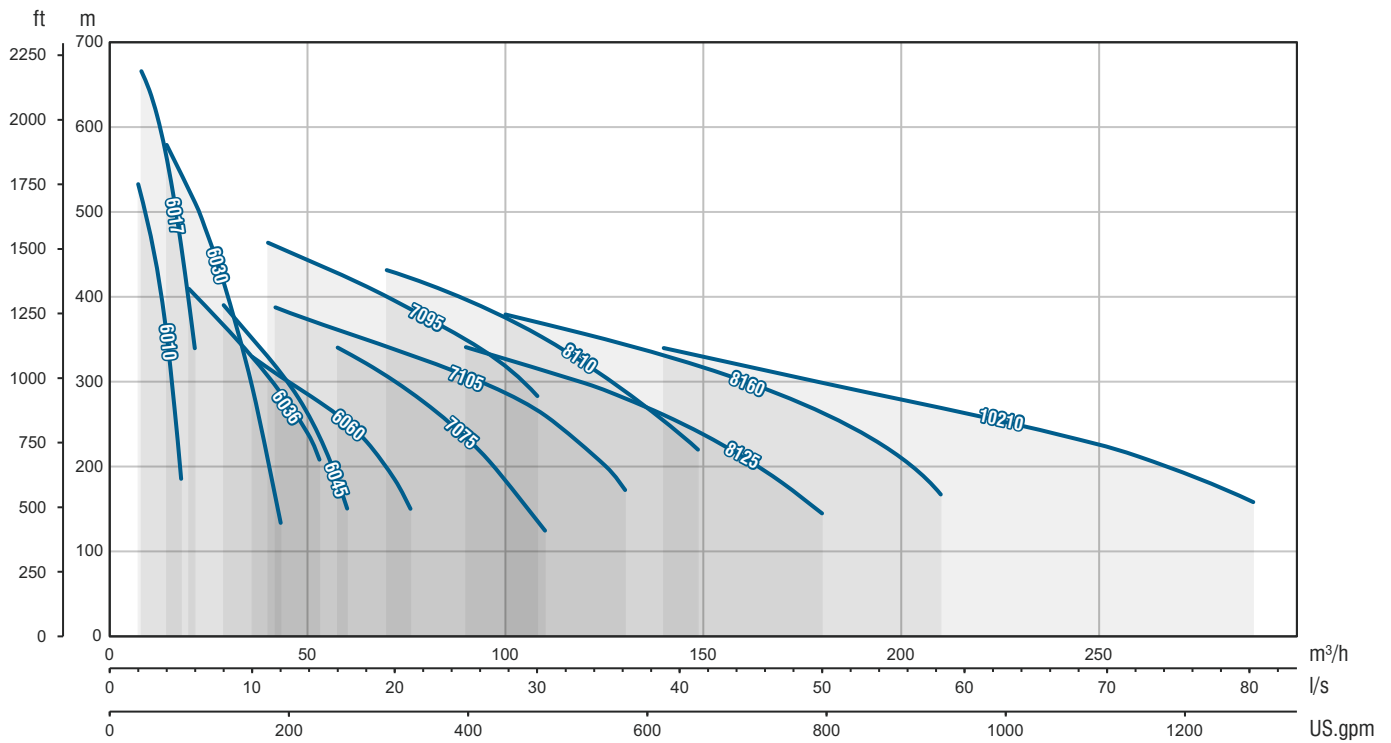
Nr	PART NAME	MATERIAL
1	Suction Case	Stainless Steel (AISI 304L)
2	Strainer	Stainless Steel (AISI 304L)
3	Suction Case Wear Ring	EPDM
4	Pump Shaft	Stainless Steel (AISI 431)
5	Collet	Stainless Steel (AISI 304)
6	Impeller Wear Ring	Stainless Steel (AISI 304L)
7	Impeller	Stainless Steel (AISI 304L)
8	Stop Ring	Bronze (ASTM B145-4A)
9	Diffuser	Stainless Steel (AISI 304L)
10	Diffuser Wear Ring	EPDM
11	Nut for Collet	Stainless Steel (AISI 304L)
12	Rubber Bearing	EPDM
13	Upper Bearing	Bronze (ASTM B145-4A)
14	Discharge Case	Stainless Steel (AISI 304L)
14.1	Discharge Case Body	Stainless Steel (AISI 304L)
14.2	Valve Cup Spring	Stainless Steel (AISI 304L)
14.3	Valve Cup Guide	Stainless Steel (AISI 304L)
14.4	Valve Cup	Stainless Steel (AISI 304L)
14.5	Upper Valve Cup Seat Retainer	Stainless Steel (AISI 304L)
14.6	Valve Cup Seat	EPDM
14.7	Lower Valve Cup Seat Retainer	Stainless Steel (AISI 304L)
15	Coupling	Stainless Steel (AISI 431)
16	Tie Rod	Stainless Steel (AISI 304L)
17	Cable Guard	Stainless Steel (AISI 304L)
18	Tie Rod Stud	Stainless Steel (AISI 316)
19	Tie Rod Nut	Stainless Steel (AISI 304L)
20	Name Plate	Stainless Steel (AISI 304L)

MATERIALS (Typical Material Combinations)

PART NAME	AISI304 DESIGN	AISI316 DESIGN*
Diffuser	AISI304L	AISI316L
Impeller	AISI304L	AISI316L
Shaft	AISI431	AISI316 , AISI630
Bearing	EPDM, Bronze (ASTM B145-4A)	NBR

*For pumps in accordance with ANSI316 design, the Product Code is BSP SSL

GENERAL PERFORMANCE

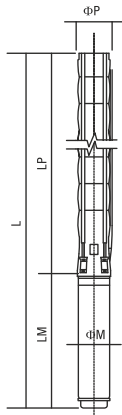


SS SUBMERSIBLE PUMPS
PERFORMANCE DATA
60 Hz



TECHNICAL SPECIFICATIONS

60Hz



Diffuser : Stainless steel (AISI 304L)
Impeller : Stainless steel (AISI 304L)
Pump shaft : Stainless steel (AISI 420)
Coupling : Stainless steel (AISI 420)
Strainer : Stainless steel (AISI 304)
Outlet connection diameter : 2 1/2" (inside threaded)

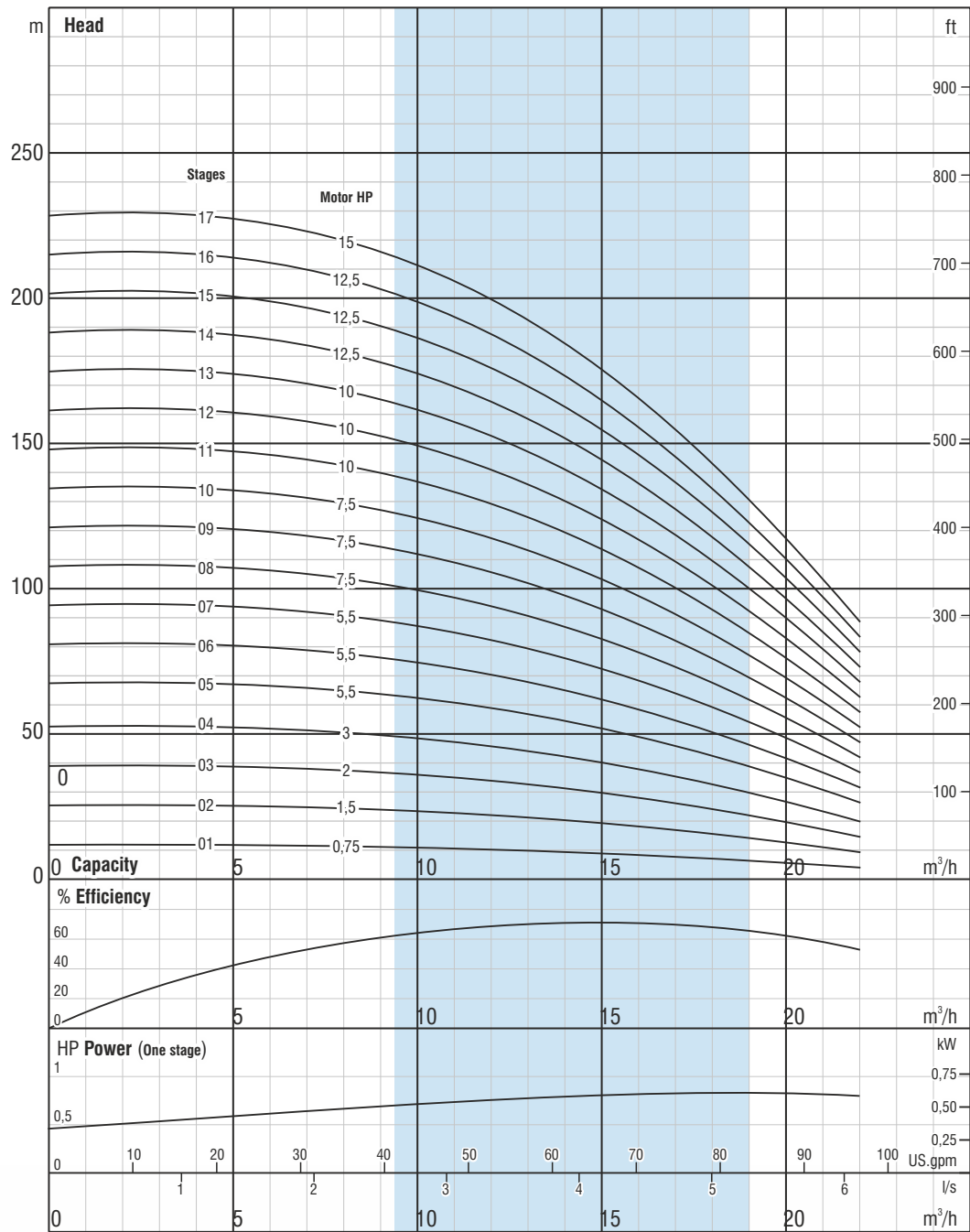
Max. sand content : 50 gr / m³
Valve cap : Stainless steel
Voltage : 460 V (+%6 / -%10)
Frequency : 60 Hz.
Max. water temperature : 50°C
Degree of protection : IP 68



Please contact us for optional materials.

Pump Type	Stages	Motor		Dimensions (mm)					Weight (kg)		
		kW	HP	L	LM	LP	ΦM	ΦP	Motor	Pump	Total
BSP SS 06010/01	1	0,55	0,75	691	361	330	95	132	8.6	5	13.6
BSP SS 06010/02	2	1,1	1,5	791	401	390	95	132	10.35	7	17.35
BSP SS 06010/03	3	1,5	2	892	441	451	95	132	10.4	8	18.4
BSP SS 06010/04	4	2,2	3	982	471	511	95	132	13.9	10	23.9
BSP SS 06010/05	5	4	5,5	1172/1221	600/649	572	95/142	132	19.8/40	11	30.8/51
BSP SS 06010/06	6	4	5,5	1232/1281	600/649	632	95/142	132	19.8/40	13	32.8/53
BSP SS 06010/07	7	4	5,5	1293/1342	600/649	693	95/142	132	19.8/40	14	33.8/54
BSP SS 06010/08	8	5,5	7,5	1408/1402	655/649	753	95/142	132	22.5/40	15	37.5/55
BSP SS 06010/09	9	5,5	7,5	1469/1463	655/649	814	95/142	132	22.5/40	17	39.5/57
BSP SS 06010/10	10	5,5	7,5	1529/1523	655/649	874	95/142	132	22.5/40	18	40.5/58
BSP SS 06010/11	11	7,5	10	1730/1613	795/678	935	95/142	132	28.8/43.5	20	48.8/63.5
BSP SS 06010/12	12	7,5	10	1790/1673	795/678	995	95/142	132	28.8/43.5	21	49.8/64.5
BSP SS 06010/13	13	7,5	10	1851/1734	795/678	1056	95/142	132	28.8/43.5	23	51.8/66.5
BSP SS 06010/14	14	9,3	12,5	1874	758	1116	142	132	50	24	74
BSP SS 06010/15	15	9,3	12,5	1935	758	1177	142	132	50	26	76
BSP SS 06010/16	16	9,3	12,5	1995	758	1237	142	132	50	27	77
BSP SS 06010/17	17	11	15	2098	800	1298	142	132	55	28	83

Pump Type	Stages	Motor		Current (A)	m ³ /h i/s	Head (m)									
		kW	HP			0	4	8	12	14	16	18	20	22	
BSP SS 06010/01	1	0,55	0,75	1.6	Head (m)	12	12	11	10	9	8	7	6	4	
BSP SS 06010/02	2	1,1	1,5	2.8		25	25	24	22	20	18	16	13	9	
BSP SS 06010/03	3	1,5	2	3.8		39	39	38	34	32	28	24	20	15	
BSP SS 06010/04	4	2,2	3	5.3		53	53	51	46	42	38	33	27	20	
BSP SS 06010/05	5	4	5,5	9.5/8.4		67	67	65	59	54	49	42	34	26	
BSP SS 06010/06	6	4	5,5	9.5/8.4		81	81	78	70	65	58	50	41	31	
BSP SS 06010/07	7	4	5,5	9.5/8.4		94	94	91	82	76	68	59	48	36	
BSP SS 06010/08	8	5,5	7,5	12.6/11.3		107	108	103	94	87	78	67	55	42	
BSP SS 06010/09	9	5,5	7,5	12.6/11.3		121	121	116	106	97	87	76	62	47	
BSP SS 06010/10	10	5,5	7,5	12.6/11.3		134	134	129	117	108	97	84	69	52	
BSP SS 06010/11	11	7,5	10	17/14.2		148	148	142	129	119	107	93	76	57	
BSP SS 06010/12	12	7,5	10	17/14.2		161	161	155	141	130	117	101	83	62	
BSP SS 06010/13	13	7,5	10	17/14.2		175	175	168	152	141	126	109	90	67	
BSP SS 06010/14	14	9,3	12,5	17.4		188	188	181	164	152	136	118	97	73	
BSP SS 06010/15	15	9,3	12,5	17.4		201	202	194	176	162	146	126	103	78	
BSP SS 06010/16	16	9,3	12,5	17.4		215	215	207	188	173	156	135	110	83	
BSP SS 06010/17	17	11	15	19.6		228	228	220	199	184	165	143	117	88	



ISO 9906 Annex A

Due to continuous improvement in design we reserve the right to amend specifications or data without prior notice.

(01 - 17 STAGES) **BSP SS 06010**

No. of vanes
6

Outlet connection diameter
2 1/2" (inside threaded)

Pump outside diameter
132 mm

Rotation
CCW

Revolution
3500 rpm

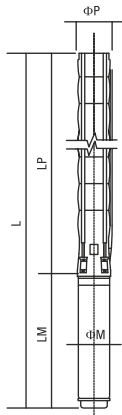
Shaft diameter
20 mm



The hydraulic working characteristics have been taken with water at 15 °C, at the atmospheric pressure of 1 bar and specific gravity is 1 gr/cm³

TECHNICAL SPECIFICATIONS

60Hz



Diffuser : Stainless steel (AISI 304L)
Impeller : Stainless steel (AISI 304L)
Pump shaft : Stainless steel (AISI 420)
Coupling : Stainless steel (AISI 420)
Strainer : Stainless steel (AISI 304)
Outlet connection diameter : 2 1/2" (inside threaded)

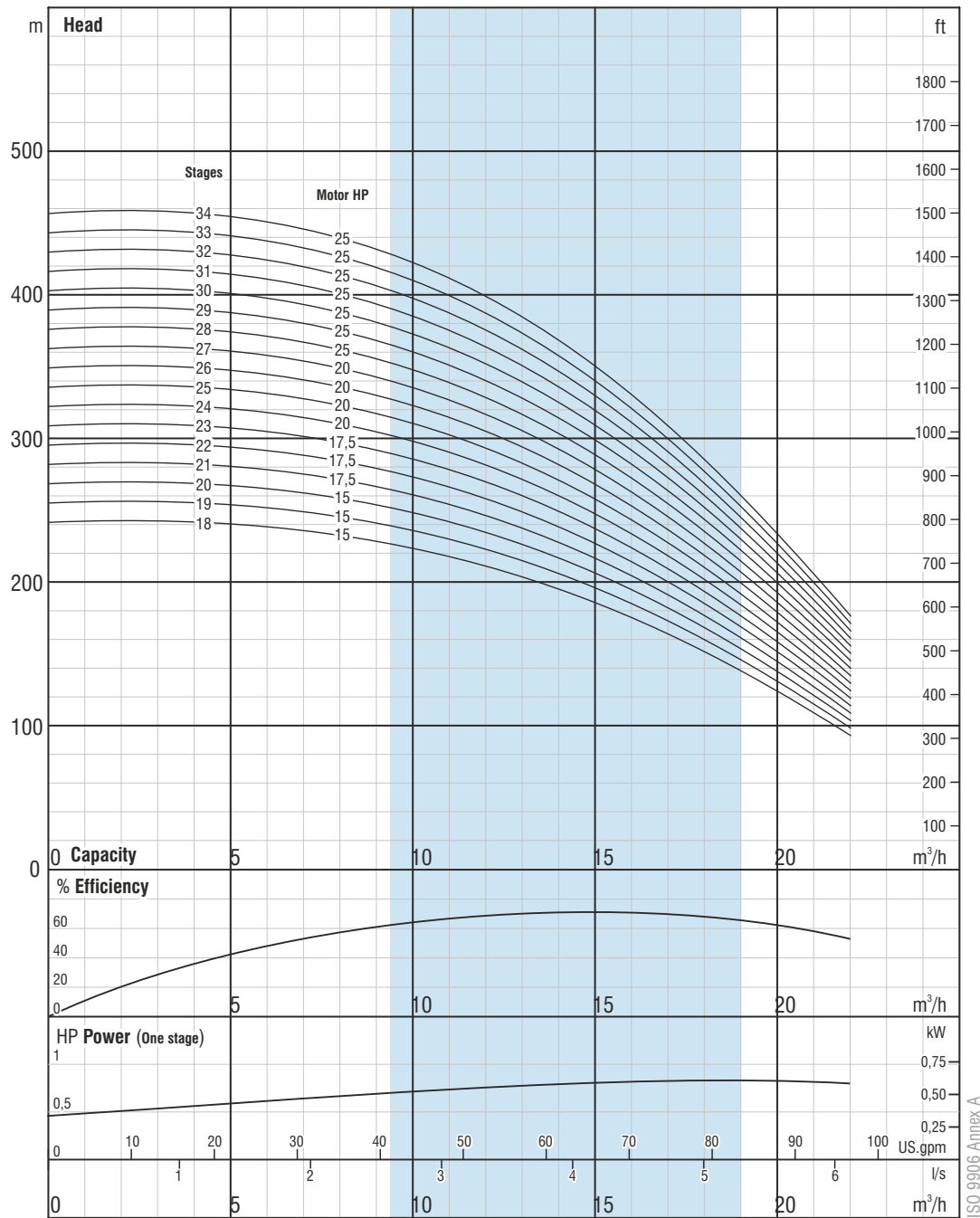
Max. sand content : 50 gr / m³
Valve cap : Stainless steel
Voltage : 460 V (+%6 / -%10)
Frequency : 60 Hz.
Max. water temperature : 50°C
Degree of protection : IP 68



Please contact us for optional materials.

Pump Type	Stages	Motor		Dimensions (mm)					Weight (kg)		
		kW	HP	L	LM	LP	ΦM	ΦP	Motor	Pump	Total
BSP SS 06010/18	18	11	15	2158	800	1358	142	132	55	30	85
BSP SS 06010/19	19	11	15	2219	800	1419	142	132	55	31	86
BSP SS 06010/20	20	11	15	2279	800	1479	142	132	55	33	88
BSP SS 06010/21	21	13	17,5	2391	851	1540	142	132	60	34	94
BSP SS 06010/22	22	13	17,5	2451	851	1600	142	132	60	36	96
BSP SS 06010/23	23	13	17,5	2512	851	1661	142	132	60	37	97
BSP SS 06010/24	24	15	20	2632	911	1721	142	132	65	39	104
BSP SS 06010/25	25	15	20	2693	911	1782	142	132	65	40	105
BSP SS 06010/26	26	15	20	2753	911	1842	142	132	65	41	106
BSP SS 06010/27	27	15	20	2814	911	1903	142	132	65	43	108
* BSP SS 06010/28	28	18,5	25	2936	973	1963	142	132	72	72	144
* BSP SS 06010/29	29	18,5	25	2997	973	2024	142	132	72	73	145
* BSP SS 06010/30	30	18,5	25	3058	973	2085	142	167	72	75	147
* BSP SS 06010/31	31	18,5	25	3118	973	2145	142	167	72	76	148
* BSP SS 06010/32	32	18,5	25	3179	973	2206	142	167	72	78	150
* BSP SS 06010/33	33	18,5	25	3239	973	2266	142	167	72	80	152
* BSP SS 06010/34	34	18,5	25	3300	973	2327	142	167	72	82	154

Pump Type	Stages	Motor		Current (A)	m ³ /h i/s	Head (m)									
		kW	HP			0	4	8	12	14	16	18	20	22	
BSP SS 06010/18	18	11	15	19,6	Head (m)	242	242	233	211	195	175	151	124	93	
BSP SS 06010/19	19	11	15	19,6		255	255	246	223	206	185	160	131	99	
BSP SS 06010/20	20	11	15	19,6		269	269	259	234	217	194	168	138	104	
BSP SS 06010/21	21	13	17,5	23,4		282	282	272	246	227	204	177	145	109	
BSP SS 06010/22	22	13	17,5	23,4		295	296	284	258	238	214	185	152	114	
BSP SS 06010/23	23	13	17,5	23,4		309	309	297	270	249	224	193	159	119	
BSP SS 06010/24	24	15	20	27,3		322	323	310	281	260	233	202	166	125	
BSP SS 06010/25	25	15	20	27,3		336	336	323	293	271	243	210	172	130	
BSP SS 06010/26	26	15	20	27,3		349	349	336	305	281	253	219	179	135	
BSP SS 06010/27	27	15	20	27,3		363	363	349	317	292	262	227	186	140	
* BSP SS 06010/28	28	18,5	25	34,5		376	376	362	328	303	272	236	193	145	
* BSP SS 06010/29	29	18,5	25	34,5		389	390	375	340	314	282	244	200	151	
* BSP SS 06010/30	30	18,5	25	34,5		403	403	388	352	325	292	252	207	156	
* BSP SS 06010/31	31	18,5	25	34,5		416	417	401	363	336	301	261	214	161	
* BSP SS 06010/32	32	18,5	25	34,5	430	430	414	375	346	311	269	221	166		
* BSP SS 06010/33	33	18,5	25	34,5	443	444	427	387	357	321	278	228	171		
* BSP SS 06010/34	34	18,5	25	34,5	457	457	440	399	368	331	286	235	176		



Due to continuous improvement in design we reserve the right to amend specifications or data without prior notice.

(18 - 34 STAGES) BSP SS 06010

No. of vanes
6

Outlet connection diameter
2 1/2" (inside threaded)

Pump outside diameter
132 mm

Rotation
CCW

Revolution
3500 rpm

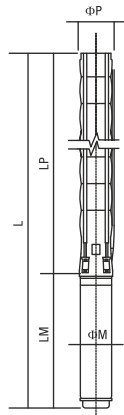
Shaft diameter
20 mm



The hydraulic working characteristics have been taken with water at 15 °C, at the atmospheric pressure of 1 bar and specific gravity is 1 gr/cm³

TECHNICAL SPECIFICATIONS

60Hz



Diffuser : Stainless steel (AISI 304L)
Impeller : Stainless steel (AISI 304L)
Pump shaft : Stainless steel (AISI 420)
Coupling : Stainless steel (AISI 420)
Strainer : Stainless steel (AISI 304)
Outlet connection diameter : 2 1/2" (inside threaded)

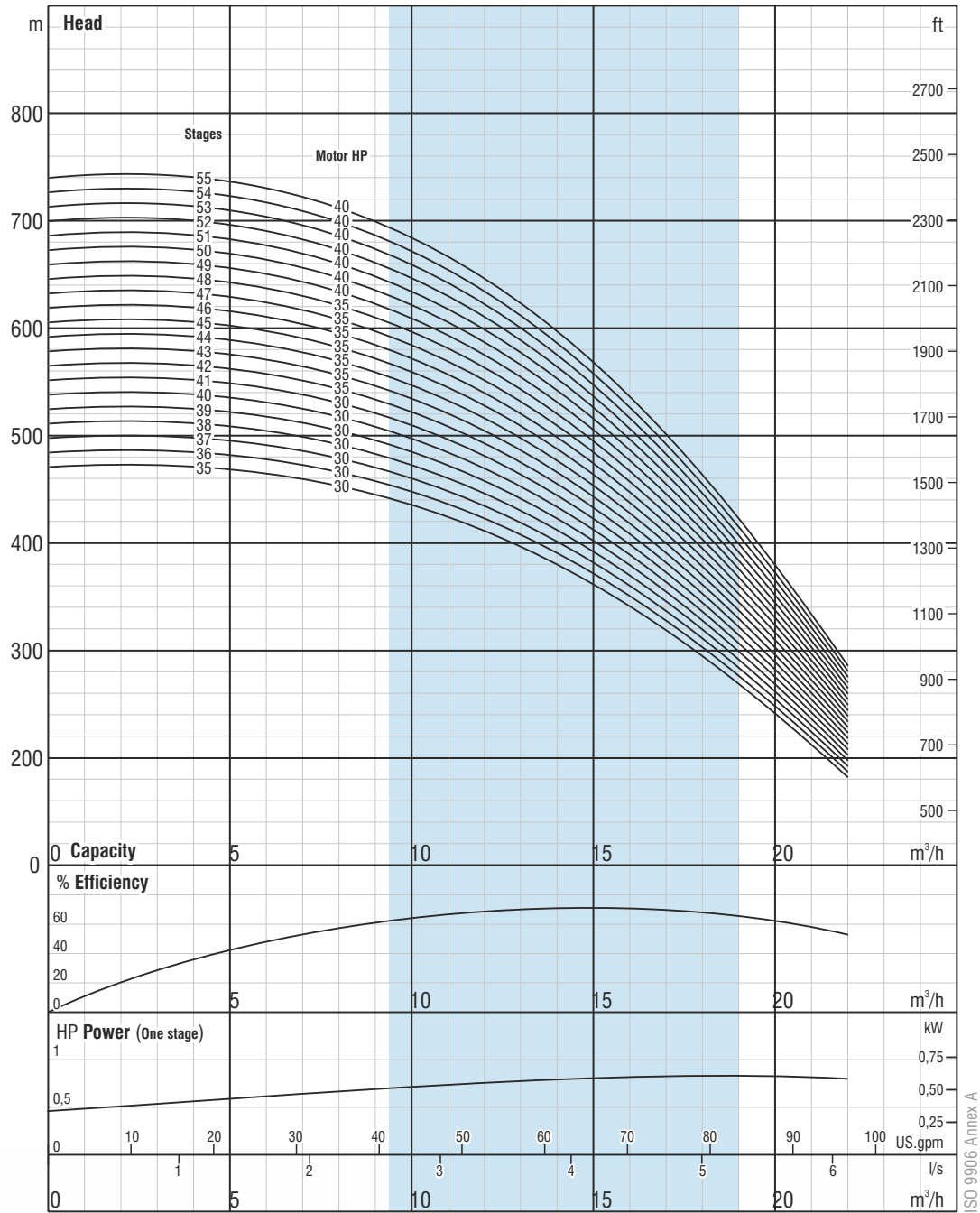
Max. sand content : 50 gr / m³
Valve cap : Stainless steel
Voltage : 460 V (+%6 / -%10)
Frequency : 60 Hz.
Max. water temperature : 50°C
Degree of protection : IP 68



Please contact us for optional materials.

Pump Type	Stages	Motor		Dimensions (mm)					Weight (kg)		
		kW	HP	L	LM	LP	ΦM	ΦP	Motor	Pump	Total
* BSP SS 06010/35	35	22	30	3393	1006	2387	142	167	76	83	159
* BSP SS 06010/36	36	22	30	3454	1006	2448	142	167	76	85	161
* BSP SS 06010/37	37	22	30	3514	1006	2508	142	167	76	87	163
* BSP SS 06010/38	38	22	30	3575	1006	2569	142	167	76	89	165
* BSP SS 06010/39	39	22	30	3635	1006	2629	142	167	76	91	167
* BSP SS 06010/40	40	22	30	3696	1006	2690	142	167	76	92	168
* BSP SS 06010/41	41	22	30	3756	1006	2750	142	167	76	94	170
* BSP SS 06010/42	42	26,5	35	3917	1106	2811	142	167	87	96	183
* BSP SS 06010/43	43	26,5	35	3977	1106	2871	142	167	87	98	185
* BSP SS 06010/44	44	26,5	35	4038	1106	2932	142	167	87	100	187
* BSP SS 06010/45	45	26,5	35	4098	1106	2992	142	167	87	101	188
* BSP SS 06010/46	46	26,5	35	4159	1106	3053	142	167	87	103	190
* BSP SS 06010/47	47	26,5	35	4219	1106	3113	142	167	87	105	192
* BSP SS 06010/48	48	26,5	35	4280	1106	3174	142	167	87	107	194
* BSP SS 06010/49	49	30	40	4451/4230	1217/996	3234	142/192	167	98/120	108	206/228
* BSP SS 06010/50	50	30	40	4512/4291	1217/996	3295	142/192	167	98/120	110	208/230
* BSP SS 06010/51	51	30	40	4572/4351	1217/996	3355	142/192	167	98/120	112	210/232
* BSP SS 06010/52	52	30	40	4633/4412	1217/996	3416	142/192	167	98/120	114	212/234
* BSP SS 06010/53	53	30	40	4693/4472	1217/996	3476	142/192	167	98/120	116	214/236
* BSP SS 06010/54	54	30	40	4754/4533	1217/996	3537	142/192	167	98/120	117	215/237
* BSP SS 06010/55	55	30	40	4814/4593	1217/996	3597	142/192	167	98/120	119	217/239

Pump Type	Stages	Motor		Current (A)	m ³ /h l/s	Head (m)											
		kW	HP			0	4	8	12	14	16	18	20	22			
* BSP SS 06010/35	35	22	30	40.1		470	470	453	410	379	340	294	241	182			
* BSP SS 06010/36	36	22	30	40.1		484	484	465	422	390	350	303	248	187			
* BSP SS 06010/37	37	22	30	40.1		497	497	478	434	401	360	311	255	192			
* BSP SS 06010/38	38	22	30	40.1		510	511	491	446	411	369	320	262	197			
* BSP SS 06010/39	39	22	30	40.1		524	524	504	457	422	379	328	269	202			
* BSP SS 06010/40	40	22	30	40.1		537	538	517	469	433	389	336	276	208			
* BSP SS 06010/41	41	22	30	40.1		551	551	530	481	444	399	345	283	213			
* BSP SS 06010/42	42	26,5	35	47.1		564	564	543	492	455	408	353	290	218			
* BSP SS 06010/43	43	26,5	35	47.1		578	578	556	504	466	418	362	297	223			
* BSP SS 06010/44	44	26,5	35	47.1		591	591	569	516	476	428	370	303	228			
* BSP SS 06010/45	45	26,5	35	47.1		604	605	582	528	487	437	378	310	234			
* BSP SS 06010/46	46	26,5	35	47.1		618	618	595	539	498	447	387	317	239			
* BSP SS 06010/47	47	26,5	35	47.1		631	632	608	551	509	457	395	324	244			
* BSP SS 06010/48	48	26,5	35	47.1		645	645	621	563	520	467	404	331	249			
* BSP SS 06010/49	49	30	40	53.4/51		658	659	634	574	530	476	412	338	254			
* BSP SS 06010/50	50	30	40	53.4/51		672	672	647	586	541	486	421	345	259			
* BSP SS 06010/51	51	30	40	53.4/51		685	685	659	598	552	496	429	352	265			
* BSP SS 06010/52	52	30	40	53.4/51		698	699	672	610	563	506	437	359	270			
* BSP SS 06010/53	53	30	40	53.4/51		712	712	685	621	574	515	446	366	275			
* BSP SS 06010/54	54	30	40	53.4/51		725	726	698	633	585	525	454	372	280			
* BSP SS 06010/55	55	30	40	53.4/51		739	739	711	645	595	535	463	379	285			



Due to continuous improvement in design we reserve the right to amend specifications or data without prior notice.

ISO 9906 Annex A

(35 - 55 STAGES) BSP SS 06010

No. of vanes
6

Outlet connection diameter
2 1/2" (inside threaded)

Pump outside diameter
132 mm

Rotation
CCW

Revolution
3500 rpm

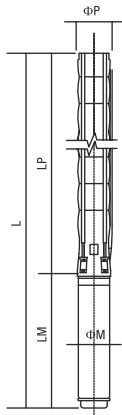
Shaft diameter
20 mm



The hydraulic working characteristics have been taken with water at 15 °C, at the atmospheric pressure of 1 bar and specific gravity is 1 gr/cm³

TECHNICAL SPECIFICATIONS

60Hz



Diffuser : Stainless steel (AISI 304L)
Impeller : Stainless steel (AISI 304L)
Pump shaft : Stainless steel (AISI 420)
Coupling : Stainless steel (AISI 420)
Strainer : Stainless steel (AISI 304)
Outlet connection diameter : 2 1/2" (inside threaded)

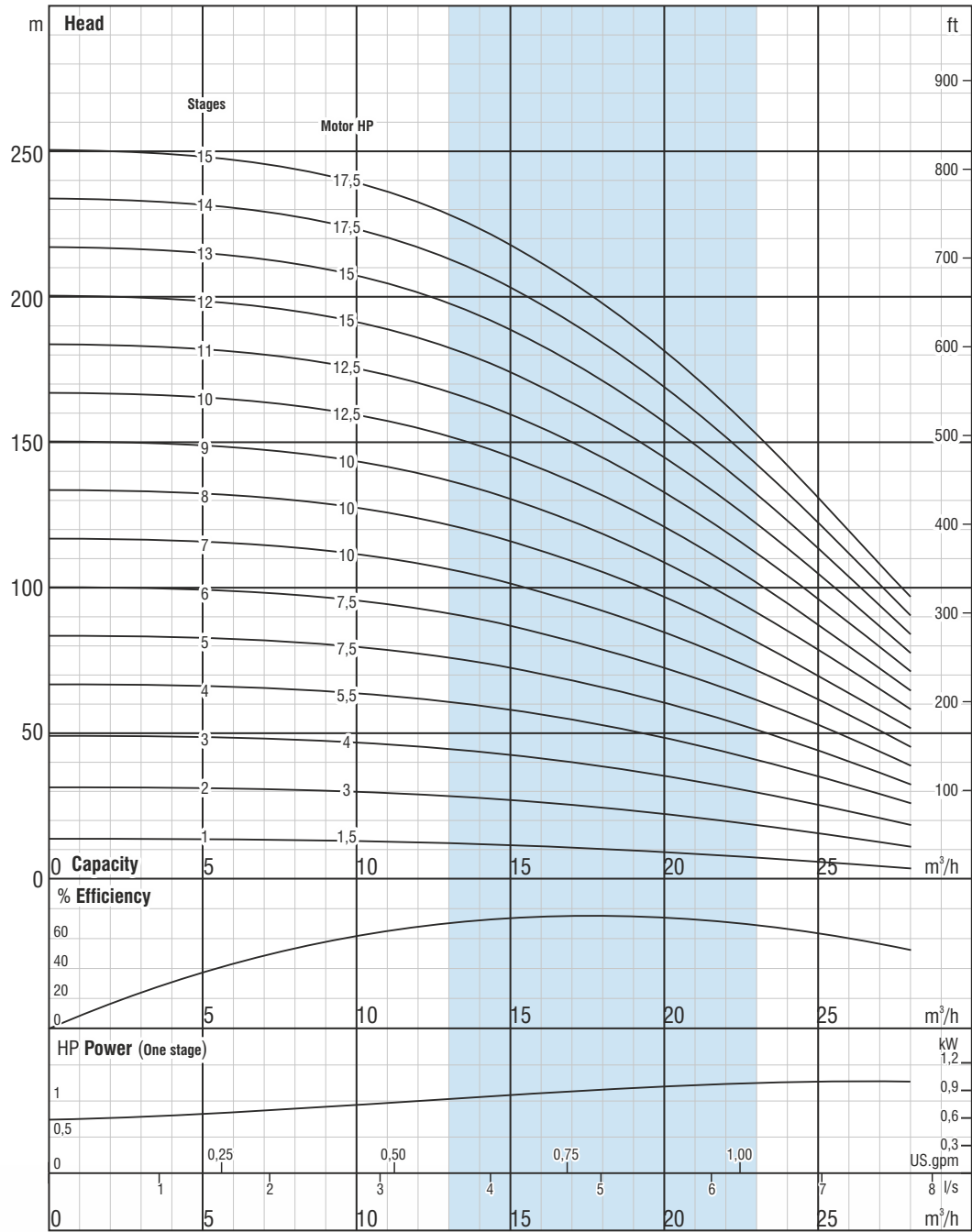
Max. sand content : 50 gr / m³
Valve cap : Stainless steel
Voltage : 460 V (+%6 / -%10)
Frequency : 60 Hz.
Max. water temperature : 50°C
Degree of protection : IP 68



Please contact us for optional materials.

Pump Type	Stages	Motor		Dimensions (mm)					Weight (kg)		
		kW	HP	L	LM	LP	ΦM	ΦP	Motor	Pump	Total
BSP SS 06017/01	1	1,1	1,5	731	401	330	95	132	10.35	5	15.35
BSP SS 06017/02	2	2,2	3	861	471	390	95	132	13.9	7	20.9
BSP SS 06017/03	3	3	4	981	530	451	95	132	16.2	8	24.2
BSP SS 06017/04	4	4	5,5	1111/1160	600/649	511	95/142	132	19.8/40	10	29.8/50
BSP SS 06017/05	5	5,5	7,5	1227/1221	655/649	572	95/142	132	22.5/40	11	33.5/51
BSP SS 06017/06	6	5,5	7,5	1287/1281	655/649	632	95/142	132	22.5/40	13	35.5/53
BSP SS 06017/07	7	7,5	10	1488/1371	795/678	693	95/142	132	28.8/43.5	14	42.8/57.5
BSP SS 06017/08	8	7,5	10	1548/1431	795/678	753	95/142	132	28.8/43.5	16	44.8/59.5
BSP SS 06017/09	9	7,5	10	1609/1492	795/678	814	95/142	132	28.8/43.5	17	45.8/60.5
BSP SS 06017/10	10	9,3	12,5	1632	758	874	142	132	50	18	68
BSP SS 06017/11	11	9,3	12,5	1693	758	935	142	132	50	20	70
BSP SS 06017/12	12	11	15	1795	800	995	142	132	55	21	76
BSP SS 06017/13	13	11	15	1856	800	1056	142	132	55	23	78
BSP SS 06017/14	14	13	17,5	1967	851	1116	142	132	60	24	84
BSP SS 06017/15	15	13	17,5	2028	851	1177	142	132	60	26	86

Pump Type	Stages	Motor		Current (A)	m ³ /h I/s	0	6	12	15	17	19	21	23	28
		kW	HP			0,00	1,67	3,33	4,17	4,72	5,28	5,83	6,39	7,78
BSP SS 06017/01	1	1,1	1,5	2.8	Head (m)	14	14	13	12	11	11	10	8	5
BSP SS 06017/02	2	2,2	3	5.3		31	30	29	27	25	23	21	18	12
BSP SS 06017/03	3	3	4	7.2		49	49	46	43	40	37	34	30	19
BSP SS 06017/04	4	4	5,5	9.5/8.4		66	65	61	57	54	50	45	40	25
BSP SS 06017/05	5	5,5	7,5	12.6/11.3		83	82	77	72	68	63	57	51	33
BSP SS 06017/06	6	5,5	7,5	12.6/11.3		100	99	93	87	82	76	69	61	39
BSP SS 06017/07	7	7,5	10	17/14.2		117	115	108	101	96	89	80	71	46
BSP SS 06017/08	8	7,5	10	17/14.2		133	132	124	116	109	101	92	81	52
BSP SS 06017/09	9	7,5	10	17/14.2		150	148	139	130	123	114	103	91	59
BSP SS 06017/10	10	9,3	12,5	17.4		167	165	155	145	137	126	115	102	66
BSP SS 06017/11	11	9,3	12,5	17.4		183	181	170	159	150	139	126	112	72
BSP SS 06017/12	12	11	15	19.6		200	198	185	174	164	152	138	122	79
BSP SS 06017/13	13	11	15	19.6		217	214	201	188	178	164	149	132	85
BSP SS 06017/14	14	13	17,5	23.4		234	231	216	203	191	177	161	142	92
BSP SS 06017/15	15	13	17,5	23.4		250	247	232	217	205	190	172	152	98



Due to continuous improvement in design we reserve the right to amend specifications or data without prior notice.

(01 - 15 STAGES) **BSP SS 06017**

No. of vanes
6

Outlet connection diameter
2 1/2" (inside threaded)

Pump outside diameter
132 mm

Rotation
CCW

Revolution
3500 rpm

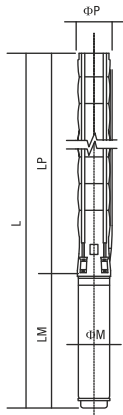
Shaft diameter
22 mm



The hydraulic working characteristics have been taken with water at 15 °C, at the atmospheric pressure of 1 bar and specific gravity is 1 gr/cm³

TECHNICAL SPECIFICATIONS

60Hz



Diffuser : Stainless steel (AISI 304L)
Impeller : Stainless steel (AISI 304L)
Pump shaft : Stainless steel (AISI 420)
Coupling : Stainless steel (AISI 420)
Strainer : Stainless steel (AISI 304)
Outlet connection diameter : 2 1/2" (inside threaded)

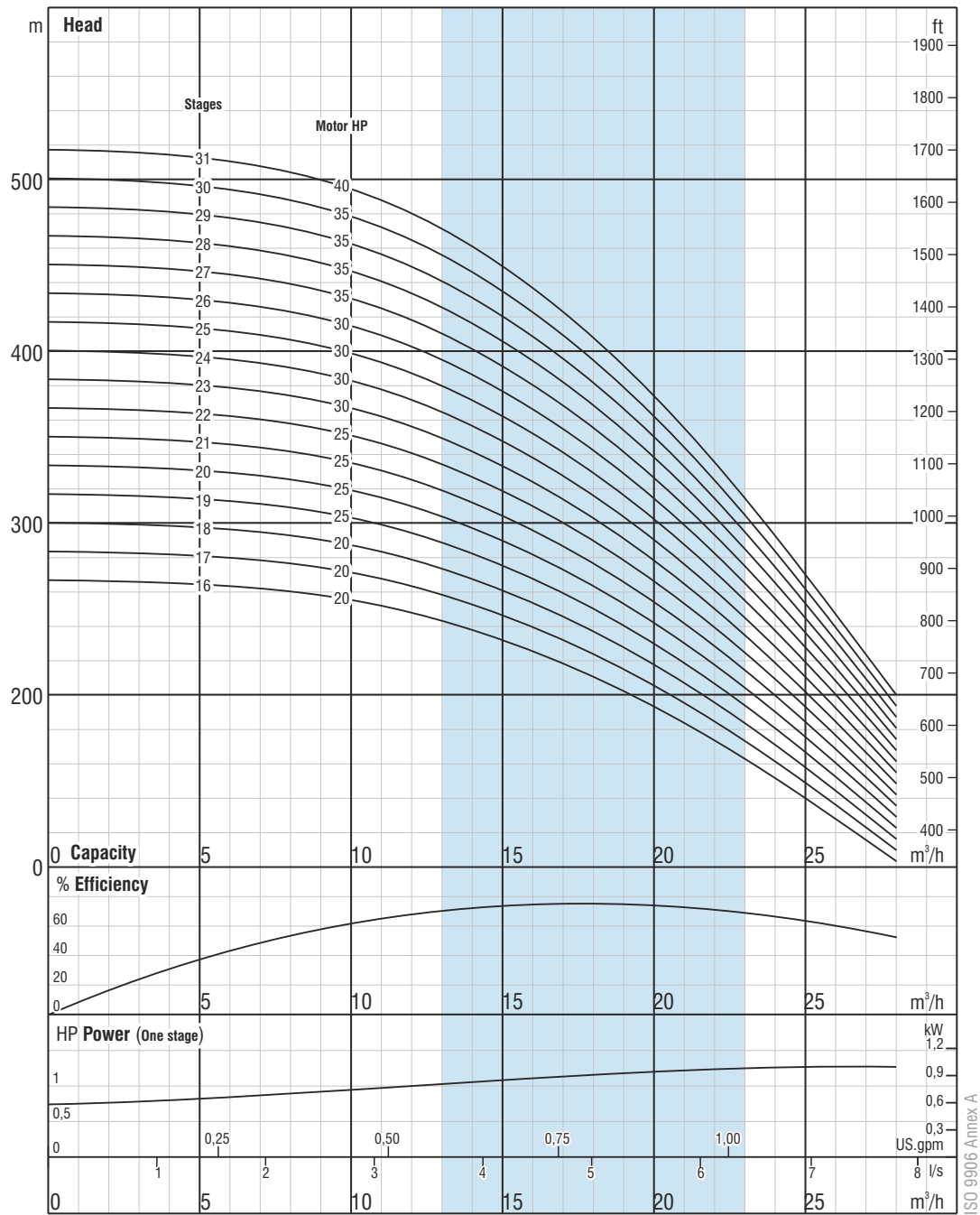
Max. sand content : 50 gr / m³
Valve cap : Stainless steel
Voltage : 460 V (+%6 / -%10)
Frequency : 60 Hz.
Max. water temperature : 50°C
Degree of protection : IP 68



Please contact us for optional materials.

Pump Type	Stages	Motor		Dimensions (mm)					Weight (kg)		
		kW	HP	L	LM	LP	ΦM	ΦP	Motor	Pump	Total
BSP SS 06017/16	16	15	20	2148	911	1237	142	132	65	27	92
BSP SS 06017/17	17	15	20	2209	911	1298	142	132	65	29	94
BSP SS 06017/18	18	15	20	2269	911	1358	142	132	65	30	95
BSP SS 06017/19	19	18,5	25	2392	973	1419	142	132	72	31	103
BSP SS 06017/20	20	18,5	25	2452	973	1479	142	132	72	33	105
BSP SS 06017/21	21	18,5	25	2513	973	1540	142	132	72	34	106
BSP SS 06017/22	22	18,5	25	2573	973	1600	142	132	72	36	108
BSP SS 06017/23	23	22	30	2667	1006	1661	142	132	76	37	113
BSP SS 06017/24	24	22	30	2727	1006	1721	142	132	76	39	115
BSP SS 06017/25	25	22	30	2788	1006	1782	142	132	76	40	116
BSP SS 06017/26	26	22	30	2848	1006	1842	142	132	76	42	118
BSP SS 06017/27	27	26,5	35	3009	1106	1903	142	132	87	43	130
* BSP SS 06017/28	28	26,5	35	3069	1106	1963	142	132	87	71	158
* BSP SS 06017/29	29	26,5	35	3130	1106	2024	142	132	87	73	160
* BSP SS 06017/30	30	26,5	35	3191	1106	2085	142	167	87	75	162
* BSP SS 06017/31	31	30	40	3362/3141	1217/996	2145	142/192	167	98/120	77	175/197

Pump Type	Stages	Motor		Current (A)	m ³ /h i/s	Head (m)									
		kW	HP			0	6	12	15	17	19	21	23	28	
BSP SS 06017/16	16	15	20	27.3	Head (m)	0,00	1,67	3,33	4,17	4,72	5,28	5,83	6,39	7,78	
BSP SS 06017/17	17	15	20	27.3		267	264	247	232	218	202	184	162	105	
BSP SS 06017/18	18	15	20	27.3		284	280	263	246	232	215	195	173	111	
BSP SS 06017/19	19	18,5	25	34.5		300	296	278	261	246	228	206	183	118	
BSP SS 06017/20	20	18,5	25	34.5		317	313	294	275	259	240	218	193	124	
BSP SS 06017/21	21	18,5	25	34.5		334	329	309	290	273	253	229	203	131	
BSP SS 06017/22	22	18,5	25	34.5		350	346	324	304	287	266	241	213	138	
BSP SS 06017/23	23	22	30	40.1		367	362	340	319	300	278	252	223	144	
BSP SS 06017/24	24	22	30	40.1		384	379	355	333	314	291	264	233	151	
BSP SS 06017/25	25	22	30	40.1		400	395	371	348	328	303	275	244	157	
BSP SS 06017/26	26	22	30	40.1		417	412	386	362	341	316	287	254	164	
BSP SS 06017/27	27	26,5	35	47.1		434	428	402	377	355	329	298	264	170	
BSP SS 06017/28	28	26,5	35	47.1		450	445	417	391	369	341	310	274	177	
* BSP SS 06017/29	29	26,5	35	47.1		467	461	433	406	382	354	321	284	183	
* BSP SS 06017/30	30	26,5	35	47.1		484	478	448	420	396	367	333	294	190	
* BSP SS 06017/31	31	30	40	53.4/52.1		500	494	464	435	410	379	344	305	197	
					517	511	479	449	423	392	356	315	203		



Due to continuous improvement in design we reserve the right to amend specifications or data without prior notice.

(16 - 31 STAGES) BSP SS 06017

No. of vanes
6

Outlet connection diameter
2 1/2" (inside threaded)

Pump outside diameter
132 mm

Rotation
CCW

Revolution
3500 rpm

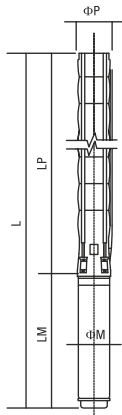
Shaft diameter
22 mm



The hydraulic working characteristics have been taken with water at 15 °C, at the atmospheric pressure of 1 bar and specific gravity is 1 gr/cm³

TECHNICAL SPECIFICATIONS

60Hz



Diffuser : Stainless steel (AISI 304L)
Impeller : Stainless steel (AISI 304L)
Pump shaft : Stainless steel (AISI 420)
Coupling : Stainless steel (AISI 420)
Strainer : Stainless steel (AISI 304)
Outlet connection diameter : 3" (inside threaded)

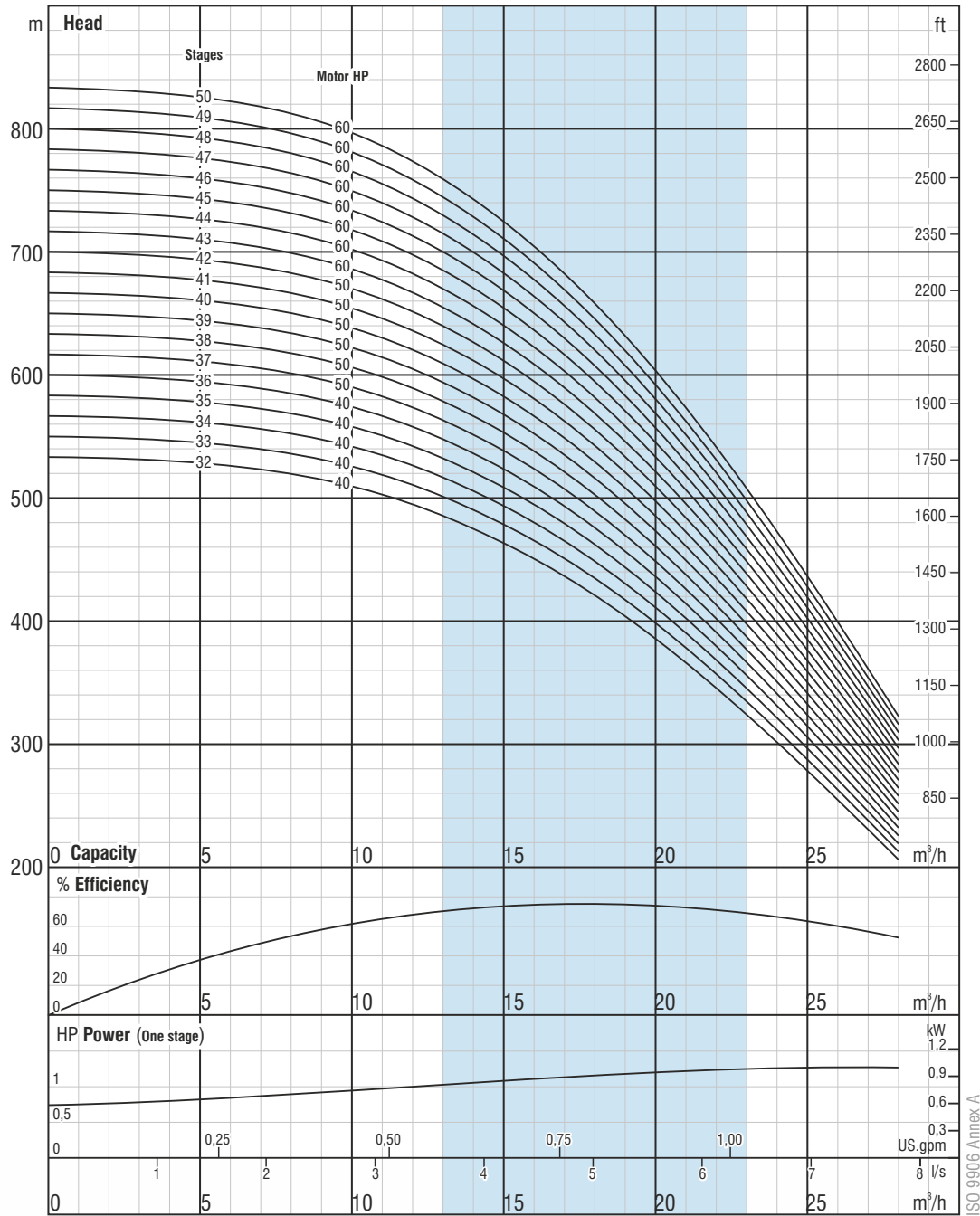
Max. sand content : 50 gr / m³
Valve cap : Stainless steel
Voltage : 460 V (+%6 / -%10)
Frequency : 60 Hz.
Max. water temperature : 50°C
Degree of protection : IP 68



Please contact us for optional materials.

Pump Type	Stages	Motor		Dimensions (mm)					Weight (kg)		
		kW	HP	L	LM	LP	ΦM	ΦP	Motor	Pump	Total
* BSP SS 06017/32	32	30	40	3423/3202	1217/996	2206	142/192	167	98/120	78	176/198
* BSP SS 06017/33	33	30	40	3483/3262	1217/996	2266	142/192	167	98/120	80	178/200
* BSP SS 06017/34	34	30	40	3544/3323	1217/996	2327	142/192	167	98/120	82	180/202
* BSP SS 06017/35	35	30	40	3604/3383	1217/996	2387	142/192	167	98/120	84	182/204
* BSP SS 06017/36	36	30	40	3665/3444	1217/996	2448	142/192	167	98/120	86	184/206
* BSP SS 06017/37	37	37	50	3755/3564	1247/1056	2508	142/192	167	103/129	87	190/216
* BSP SS 06017/38	38	37	50	3816/3625	1247/1056	2569	142/192	167	103/129	89	192/218
* BSP SS 06017/39	39	37	50	3876/3685	1247/1056	2629	142/192	167	103/129	91	194/220
* BSP SS 06017/40	40	37	50	3937/3746	1247/1056	2690	142/192	167	103/129	93	196/222
* BSP SS 06017/41	41	37	50	3997/3806	1247/1056	2750	142/192	167	103/129	95	198/224
* BSP SS 06017/42	42	37	50	4058/3867	1247/1056	2811	142/192	167	103/129	96	199/225
* BSP SS 06017/43	43	45	60	4218/3987	1347/1116	2871	142/192	167	110/138	98	208/236
* BSP SS 06017/44	44	45	60	4279/4048	1347/1116	2932	142/192	167	110/138	100	210/238
* BSP SS 06017/45	45	45	60	4339/4108	1347/1116	2992	142/192	167	110/138	102	212/240
* BSP SS 06017/46	46	45	60	4400/4169	1347/1116	3053	142/192	167	110/138	103	213/241
* BSP SS 06017/47	47	45	60	4460/4229	1347/1116	3113	142/192	167	110/138	105	215/243
* BSP SS 06017/48	48	45	60	4521/4290	1347/1116	3174	142/192	167	110/138	107	217/245
* BSP SS 06017/49	49	45	60	4581/4350	1347/1116	3234	142/192	167	110/138	109	219/247
* BSP SS 06017/50	50	45	60	4642/4411	1347/1116	3295	142/192	167	110/138	111	221/249

Pump Type	Stages	Motor		Current (A)	m ³ /h l/s	Head (m)									
		kW	HP			0	6	12	15	17	19	21	23	28	
* BSP SS 06017/32	32	30	40	53.4/51	Head (m)	534	527	494	464	437	405	367	325	210	
* BSP SS 06017/33	33	30	40	53.4/51		550	544	510	478	451	417	378	335	216	
* BSP SS 06017/34	34	30	40	53.4/51		567	560	525	493	464	430	390	345	223	
* BSP SS 06017/35	35	30	40	53.4/51		584	576	541	507	478	443	401	355	229	
* BSP SS 06017/36	36	30	40	53.4/51		600	593	556	522	492	455	413	365	236	
* BSP SS 06017/37	37	37	50	66.6/61.4		617	609	572	536	505	468	424	376	242	
* BSP SS 06017/38	38	37	50	66.6/61.4		634	626	587	551	519	480	436	386	249	
* BSP SS 06017/39	39	37	50	66.6/61.4		650	642	603	565	533	493	447	396	255	
* BSP SS 06017/40	40	37	50	66.6/61.4		667	659	618	580	546	506	459	406	262	
* BSP SS 06017/41	41	37	50	66.6/61.4		684	675	633	594	560	518	470	416	269	
* BSP SS 06017/42	42	37	50	66.6/61.4		700	692	649	609	574	531	482	426	275	
* BSP SS 06017/43	43	45	60	82.1/74.8		717	708	664	623	587	544	493	437	282	
* BSP SS 06017/44	44	45	60	82.1/74.8		734	725	680	638	601	556	505	447	288	
* BSP SS 06017/45	45	45	60	82.1/74.8		750	741	695	652	614	569	516	457	295	
* BSP SS 06017/46	46	45	60	82.1/74.8		767	758	711	667	628	582	528	467	301	
* BSP SS 06017/47	47	45	60	82.1/74.8		784	774	726	681	642	594	539	477	308	
* BSP SS 06017/48	48	45	60	82.1/74.8		800	791	742	696	655	607	551	487	314	
* BSP SS 06017/49	49	45	60	82.1/74.8		817	807	757	710	669	620	562	497	321	
* BSP SS 06017/50	50	45	60	82.1/74.8		834	824	773	725	683	632	573	508	328	



Due to continuous improvement in design we reserve the right to amend specifications or data without prior notice.

(32 - 50 STAGES) BSP SS 06017

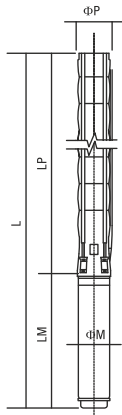
- | | |
|---|--------------------------------|
| No. of vanes
6 | Rotation
CCW |
| Outlet connection diameter
2 1/2" (inside threaded) | Revolution
3500 rpm |
| Pump outside diameter
132 mm | Shaft diameter
22 mm |



The hydraulic working characteristics have been taken with water at 15 °C, at the atmospheric pressure of 1 bar and specific gravity is 1 gr/cm³

TECHNICAL SPECIFICATIONS

60Hz



Diffuser : Stainless steel (AISI 304L)
Impeller : Stainless steel (AISI 304L)
Pump shaft : Stainless steel (AISI 420)
Coupling : Stainless steel (AISI 420)
Strainer : Stainless steel (AISI 304)
Outlet connection diameter : 3" (inside threaded)

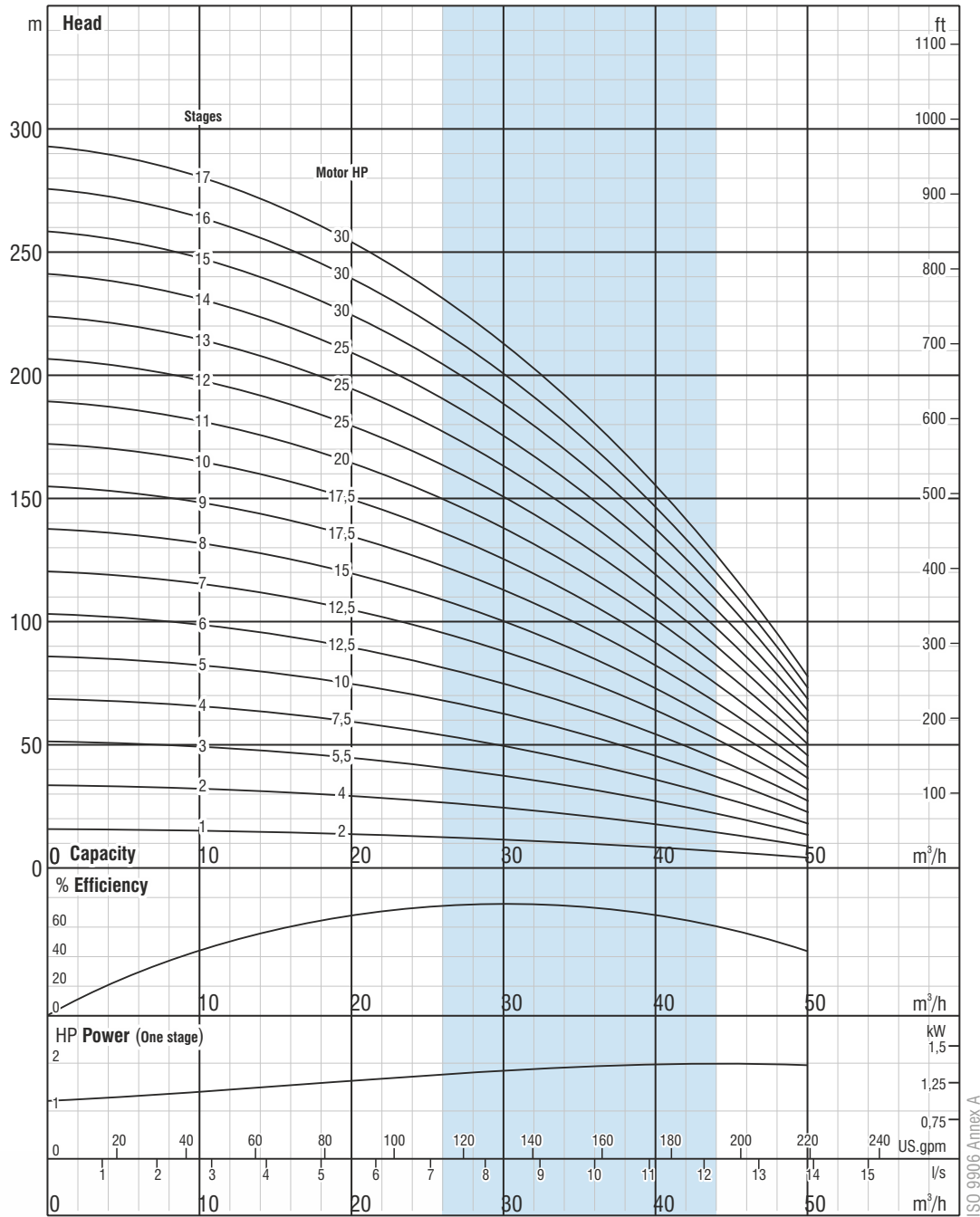
Max. sand content : 50 gr / m³
Valve cap : Stainless steel
Voltage : 460 V (+%6 / -%10)
Frequency : 60 Hz.
Max. water temperature : 50°C
Degree of protection : IP 68



Please contact us for optional materials.

Pump Type	Stages	Motor		Dimensions (mm)					Weight (kg)		
		kW	HP	L	LM	LP	ΦM	ΦP	Motor	Pump	Total
BSP SS 06030/01	1	1,5	2	805	441	364	95	132	10.4	6	16.4
BSP SS 06030/02	2	3	4	989	530	459	95	132	16.2	9	25.2
BSP SS 06030/03	3	4	5,5	1154/1203	600/649	554	95/142	132	19.8/40	11	30.8/51
BSP SS 06030/04	4	5,5	7,5	1304/1298	655/649	649	95/142	132	22.5/40	13	35.5/53
BSP SS 06030/05	5	7,5	10	1539/1422	795/678	744	95/142	132	28.8/43.5	15	43.8/58.5
BSP SS 06030/06	6	9,3	12,5	1597	758	839	142	132	50	17	67
BSP SS 06030/07	7	9,3	12,5	1692	758	934	142	132	50	19	69
BSP SS 06030/08	8	11	15	1829	800	1029	142	132	55	21	76
BSP SS 06030/09	9	13	17,5	1975	851	1124	142	132	60	23	83
BSP SS 06030/10	10	13	17,5	2070	851	1219	142	132	60	25	85
BSP SS 06030/11	11	15	20	2225	911	1314	142	132	65	27	92
BSP SS 06030/12	12	18,5	25	2382	973	1409	142	132	72	29	101
BSP SS 06030/13	13	18,5	25	2477	973	1504	142	132	72	31	103
BSP SS 06030/14	14	18,5	25	2572	973	1599	142	132	72	33	105
BSP SS 06030/15	15	22	30	2700	1006	1694	142	132	76	36	112
BSP SS 06030/16	16	22	30	2795	1006	1789	142	132	76	38	114
BSP SS 06030/17	17	22	30	2890	1006	1884	142	132	76	40	116

Pump Type	Stages	Motor		Current (A)	m ³ /h i/s	Head (m)									
		kW	HP			0	12	20	24	28	32	36	40	45	
BSP SS 06030/01	1	1,5	2	3.8	Head (m)	16	15	13	13	12	11	9	8	6	
BSP SS 06030/02	2	3	4	7.2		33	31	28	26	25	22	20	17	13	
BSP SS 06030/03	3	4	5,5	9.5/8.4		52	49	45	42	39	36	32	27	21	
BSP SS 06030/04	4	5,5	7,5	12.6/11.3		69	65	60	56	52	48	43	37	28	
BSP SS 06030/05	5	7,5	10	17/14.2		86	81	75	70	65	60	53	46	35	
BSP SS 06030/06	6	9,3	12,5	17.4		103	98	90	84	78	72	64	55	42	
BSP SS 06030/07	7	9,3	12,5	17.4		120	114	105	99	92	84	74	64	49	
BSP SS 06030/08	8	11	15	19.6		138	130	119	113	105	96	85	73	56	
BSP SS 06030/09	9	13	17,5	23.4		155	146	134	127	118	107	96	82	63	
BSP SS 06030/10	10	13	17,5	23.4		172	163	149	141	131	119	106	92	70	
BSP SS 06030/11	11	15	20	27.3		189	179	164	155	144	131	117	101	77	
BSP SS 06030/12	12	18,5	25	34.5		206	195	179	169	157	143	128	110	84	
BSP SS 06030/13	13	18,5	25	34.5		224	211	194	183	170	155	138	119	92	
BSP SS 06030/14	14	18,5	25	34.5		241	228	209	197	183	167	149	128	99	
BSP SS 06030/15	15	22	30	40.1		258	244	224	211	196	179	160	137	106	
BSP SS 06030/16	16	22	30	40.1		275	260	239	225	209	191	170	147	113	
BSP SS 06030/17	17	22	30	40.1		292	276	254	239	222	203	181	156	120	



Due to continuous improvement in design we reserve the right to amend specifications or data without prior notice.

(01 - 17 STAGES) **BSP SS 06030**

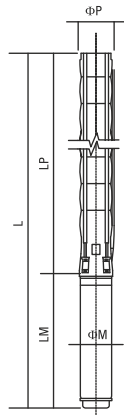
No. of vanes	7	Rotation	CCW
Outlet connection diameter	3" (inside threaded)	Revolution	3500 rpm
Pump outside diameter	132 mm	Shaft diameter	22 mm

The hydraulic working characteristics have been taken with water at 15 °C, at the atmospheric pressure of 1 bar and specific gravity is 1 gr/cm³



TECHNICAL SPECIFICATIONS

60Hz



Diffuser : Stainless steel (AISI 304L)
Impeller : Stainless steel (AISI 304L)
Pump shaft : Stainless steel (AISI 420)
Coupling : Stainless steel (AISI 420)
Strainer : Stainless steel (AISI 304)
Outlet connection diameter : 3" (inside threaded)

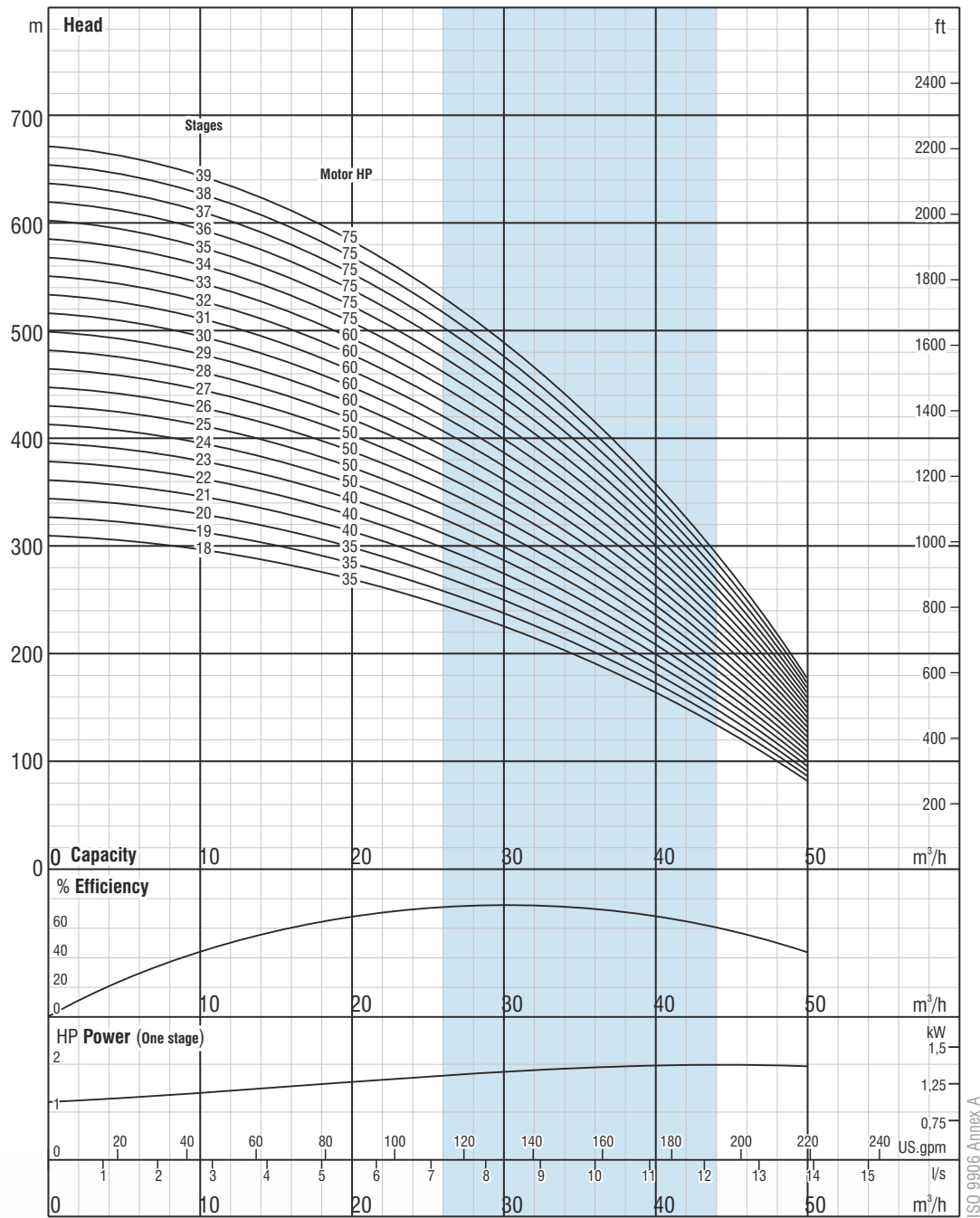
Max. sand content : 50 gr / m³
Valve cap : Stainless steel
Voltage : 460 V (+%6 / -%10)
Frequency : 60 Hz.
Max. water temperature : 50°C
Degree of protection : IP 68



Please contact us for optional materials.

Pump Type	Stages	Motor		Dimensions (mm)					Weight (kg)		
		kW	HP	L	LM	LP	ΦM	ΦP	Motor	Pump	Total
BSP SS 06030/18	18	26,5	35	3085	1106	1979	142	132	87	42	129
BSP SS 06030/19	19	26,5	35	3180	1106	2074	142	132	87	44	131
BSP SS 06030/20	20	26,5	35	3275	1106	2169	142	132	87	46	133
BSP SS 06030/21	21	30	40	3481/3260	1217/996	2264	142/192	132	98/120	48	146/168
BSP SS 06030/22	22	30	40	3576/3355	1217/996	2359	142/192	132	98/120	50	148/170
BSP SS 06030/23	23	30	40	3671/3450	1217/996	2454	142/192	132	98/120	52	150/172
BSP SS 06030/24	24	37	50	3796/3605	1247/1056	2549	142/192	132	103/129	54	157/183
BSP SS 06030/25	25	37	50	3891/3700	1247/1056	2644	142/192	132	103/129	56	159/185
BSP SS 06030/26	26	37	50	3986/3795	1247/1056	2739	142/192	132	103/129	58	161/187
* BSP SS 06030/27	27	37	50	4081/3890	1247/1056	2834	142/192	132	103/129	91	194/220
* BSP SS 06030/28	28	37	50	4176/3985	1247/1056	2929	142/192	132	103/129	94	197/223
* BSP SS 06030/29	29	45	60	4372/4141	1347/1116	3025	142/192	167	110/138	97	207/235
* BSP SS 06030/30	30	45	60	4467/4236	1347/1116	3120	142/192	167	110/138	100	210/238
* BSP SS 06030/31	31	45	60	4562/4331	1347/1116	3215	142/192	167	110/138	103	213/241
* BSP SS 06030/32	32	45	60	4657/4426	1347/1116	3310	142/192	167	110/138	105	215/243
* BSP SS 06030/33	33	45	60	4752/4521	1347/1116	3405	142/192	167	110/138	108	218/246
* BSP SS 06030/34	34	55	75	4718	1218	3500	172	167	138	111	249
* BSP SS 06030/35	35	55	75	4813	1218	3595	172	167	138	113	251
* BSP SS 06030/36	36	55	75	4908	1218	3690	172	167	138	116	254
* BSP SS 06030/37	37	55	75	5003	1218	3785	172	167	138	118	256
* BSP SS 06030/38	38	55	75	5098	1218	3880	172	167	138	121	259
* BSP SS 06030/39	39	55	75	5193	1218	3975	172	167	138	124	262

Pump Type	Stages	Motor		Current (A)	m ³ /h l/s	Head (m)												
		kW	HP			0	12	20	24	28	32	36	40	45				
BSP SS 06030/18	18	26,5	35	47.1		310	293	269	253	235	215	191	165	127				
BSP SS 06030/19	19	26,5	35	47.1		327	309	284	267	249	227	202	174	134				
BSP SS 06030/20	20	26,5	35	47.1		344	325	299	282	262	239	213	183	141				
BSP SS 06030/21	21	30	40	53.4/51		361	341	314	296	275	251	223	192	148				
BSP SS 06030/22	22	30	40	53.4/51		378	358	329	310	288	263	234	202	155				
BSP SS 06030/23	23	30	40	53.4/51		396	374	344	324	301	275	245	211	162				
BSP SS 06030/24	24	37	50	66.6/61.4		413	390	358	338	314	287	255	220	169				
BSP SS 06030/25	25	37	50	66.6/61.4		430	406	373	352	327	298	266	229	176				
BSP SS 06030/26	26	37	50	66.6/61.4		447	423	388	366	340	310	277	238	183				
* BSP SS 06030/27	27	37	50	66.6/61.4		464	439	403	380	353	322	287	247	190				
* BSP SS 06030/28	28	37	50	66.6/61.4		482	455	418	394	366	334	298	256	197				
* BSP SS 06030/29	29	45	60	82.1/74.8		499	471	433	408	379	346	308	266	204				
* BSP SS 06030/30	30	45	60	82.1/74.8		516	488	448	422	392	358	319	275	211				
* BSP SS 06030/31	31	45	60	82.1/74.8		533	504	463	436	406	370	330	284	218				
* BSP SS 06030/32	32	45	60	82.1/74.8		550	520	478	451	419	382	340	293	225				
* BSP SS 06030/33	33	45	60	82.1/74.8		568	536	493	465	432	394	351	302	232				
* BSP SS 06030/34	34	55	75	93.4		585	553	508	479	445	406	362	311	239				
* BSP SS 06030/35	35	55	75	93.4		602	569	523	493	458	418	372	321	246				
* BSP SS 06030/36	36	55	75	93.4		619	585	538	507	471	430	383	330	253				
* BSP SS 06030/37	37	55	75	93.4		636	601	553	521	484	442	394	339	260				
* BSP SS 06030/38	38	55	75	93.4		654	618	568	535	497	454	404	348	267				
* BSP SS 06030/39	39	55	75	93.4		671	634	582	549	510	466	415	357	275				



Due to continuous improvement in design we reserve the right to amend specifications or data without prior notice.

(18 - 39 STAGES) **BSP SS 06030**

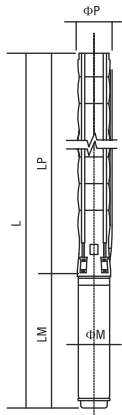
No. of vanes 7	Rotation CCW
Outlet connection diameter 3" (inside threaded)	Revolution 3500 rpm
Pump outside diameter 132 mm	Shaft diameter 22 mm

The hydraulic working characteristics have been taken with water at 15 °C, at the atmospheric pressure of 1 bar and specific gravity is 1 gr/cm³



TECHNICAL SPECIFICATIONS

60Hz



Diffuser : Stainless steel (AISI 304L)
Impeller : Stainless steel (AISI 304L)
Pump shaft : Stainless steel (AISI 420)
Coupling : Stainless steel (AISI 420)
Strainer : Stainless steel (AISI 304)
Outlet connection diameter : 4" (inside threaded)

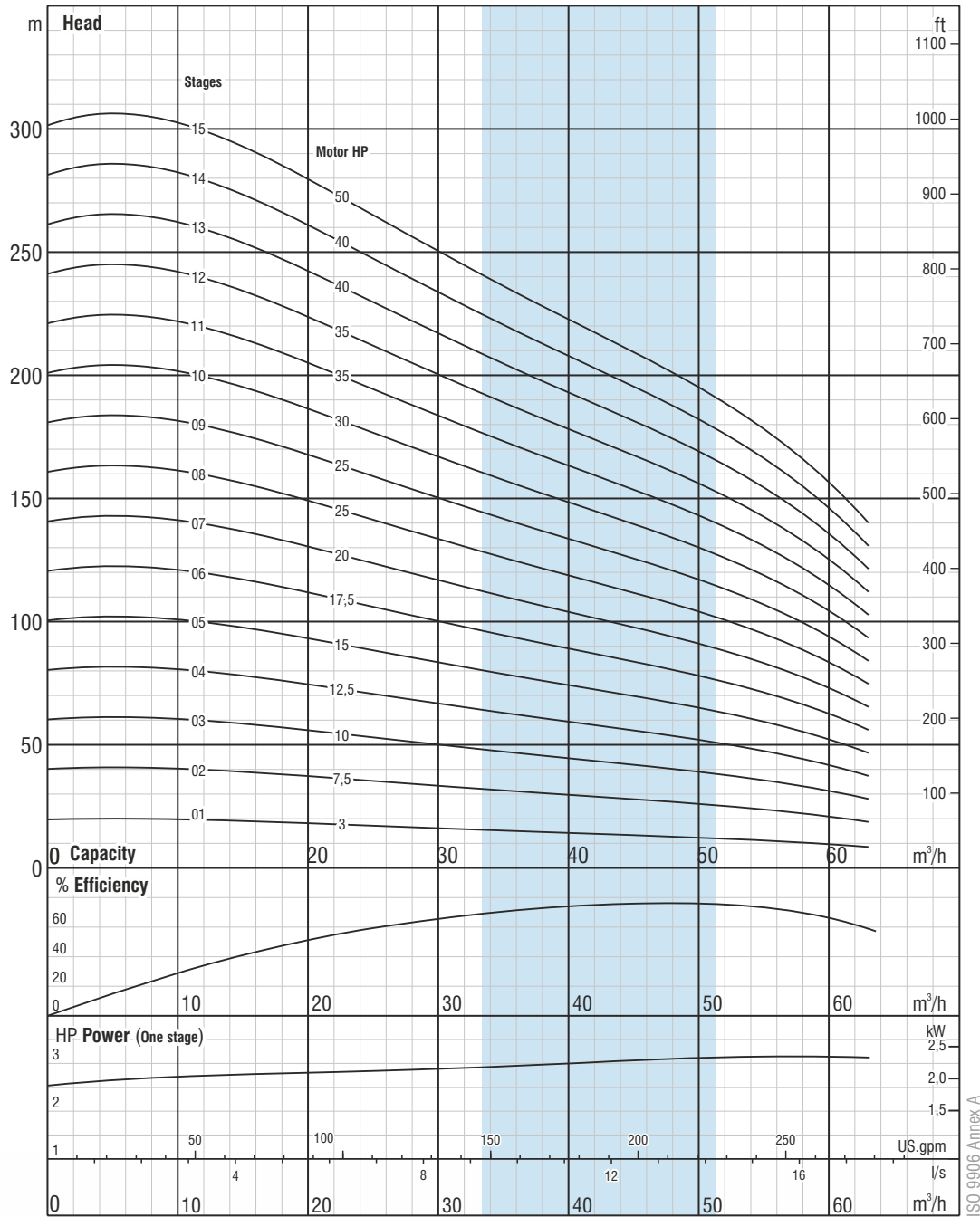
Max. sand content : 50 gr / m³
Valve cap : Stainless steel
Voltage : 460 V (+%6 / -%10)
Frequency : 60 Hz.
Max. water temperature : 50°C
Degree of protection : IP 68



Please contact us for optional materials.

Pump Type	Stages	Motor		Dimensions (mm)					Weight (kg)		
		kW	HP	L	LM	LP	ΦM	ΦP	Motor	Pump	Total
BSP SS 06036/01	1	2,2	3	853	471	382	95	132	13.9	7	20.9
BSP SS 06036/02	2	5,5	7,5	1149/1143	655/649	494	95/142	132	22.5/40	10	32.5/50
BSP SS 06036/03	3	7,5	10	1401/1284	795/678	606	95/142	132	28.8/43.5	12	40.8/55.5
BSP SS 06036/04	4	9,3	12,5	1476	758	718	142	132	50	15	65
BSP SS 06036/05	5	11	15	1630	800	830	142	132	55	18	73
BSP SS 06036/06	6	13	17,5	1793	851	942	142	132	60	20	80
BSP SS 06036/07	7	15	20	1965	911	1054	142	132	65	23	88
BSP SS 06036/08	8	18,5	25	2139	973	1166	142	132	72	26	98
BSP SS 06036/09	9	18,5	25	2251	973	1278	142	132	72	28	100
BSP SS 06036/10	10	22	30	2396	1006	1390	142	132	76	31	107
BSP SS 06036/11	11	26,5	35	2608	1106	1502	142	132	87	34	121
BSP SS 06036/12	12	26,5	35	2720	1106	1614	142	132	87	36	123
BSP SS 06036/13	13	30	40	2943/2722	1217/996	1726	142/192	132	98/120	39	137/159
BSP SS 06036/14	14	30	40	3055/2834	1217/996	1838	142/192	132	98/120	42	140/162
BSP SS 06036/15	15	37	50	3197/3006	1247/1056	1950	142/192	132	103/129	44	147/173

Pump Type	Stages	Motor		Current (A)	m ³ /h l/s	Head (m)												
		kW	HP			0	10	20	30	40	45	50	55	60				
BSP SS 06036/01	1	2,2	3	5.3		19	19	17	15	13	12	11	10	9				
BSP SS 06036/02	2	5,5	7,5	12.6/11.3		39	39	36	32	28	27	25	23	20				
BSP SS 06036/03	3	7,5	10	17/14.2		60	60	56	50	45	42	39	36	31				
BSP SS 06036/04	4	9,3	12,5	17.4		80	81	75	67	59	56	52	48	42				
BSP SS 06036/05	5	11	15	19.6		100	101	93	83	74	70	65	59	52				
BSP SS 06036/06	6	13	17,5	23.4		121	121	112	100	89	84	78	71	63				
BSP SS 06036/07	7	15	20	27.3		141	141	130	117	104	98	91	83	73				
BSP SS 06036/08	8	18,5	25	34.5		161	161	149	134	119	112	104	95	84				
BSP SS 06036/09	9	18,5	25	34.5		181	181	168	150	134	126	117	107	94				
BSP SS 06036/10	10	22	30	40.1		201	202	186	167	148	140	130	119	104				
BSP SS 06036/11	11	26,5	35	47.1		221	222	205	184	163	153	143	131	115				
BSP SS 06036/12	12	26,5	35	47.1		241	242	224	200	178	167	156	143	125				
BSP SS 06036/13	13	30	40	53.4/51		261	262	242	217	193	181	169	155	136				
BSP SS 06036/14	14	30	40	53.4/51		281	282	261	234	208	195	182	166	146				
BSP SS 06036/15	15	37	50	66.6/61.4		301	302	280	250	223	209	195	178	157				



Due to continuous improvement in design we reserve the right to amend specifications or data without prior notice.

(01 - 15 STAGES) BSP SS 06036

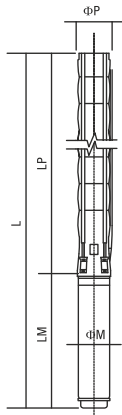
No. of vanes	6	Rotation	CCW
Outlet connection diameter	4" (inside threaded)	Revolution	3500 rpm
Pump outside diameter	144 mm	Shaft diameter	22 mm

The hydraulic working characteristics have been taken with water at 15 °C, at the atmospheric pressure of 1 bar and specific gravity is 1 gr/cm³



TECHNICAL SPECIFICATIONS

60Hz



Diffuser : Stainless steel (AISI 304L)
Impeller : Stainless steel (AISI 304L)
Pump shaft : Stainless steel (AISI 420)
Coupling : Stainless steel (AISI 420)
Strainer : Stainless steel (AISI 304)
Outlet connection diameter : 4" (inside threaded)

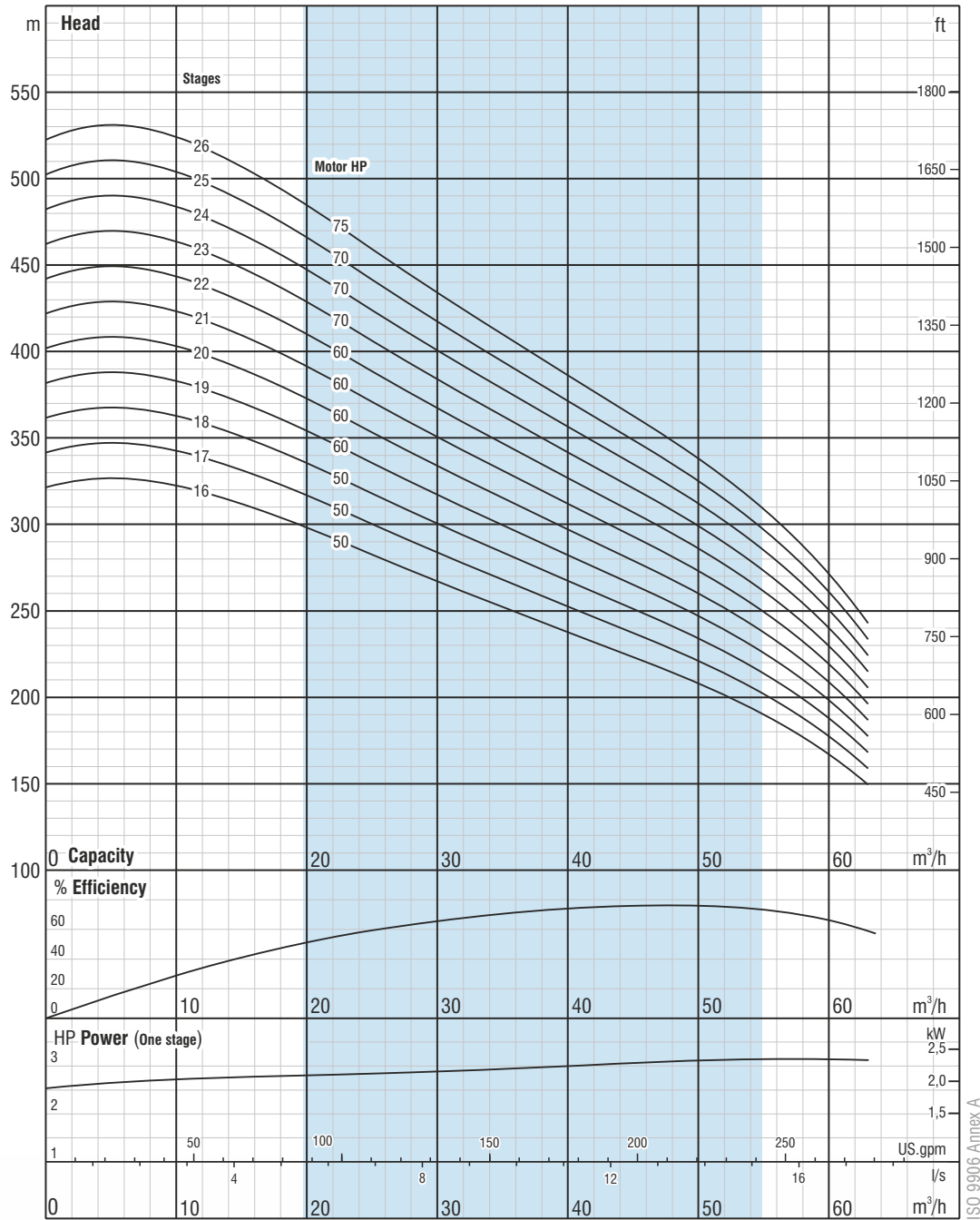
Max. sand content : 50 gr / m³
Valve cap : Stainless steel
Voltage : 460 V (+%6 / -%10)
Frequency : 60 Hz.
Max. water temperature : 50°C
Degree of protection : IP 68



Please contact us for optional materials.

Pump Type	Stages	Motor		Dimensions (mm)					Weight (kg)		
		kW	HP	L	LM	LP	ΦM	ΦP	Motor	Pump	Total
BSP SS 06036/16	16	37	50	3309/3118	1247/1056	2062	142/192	132	103/129	47	150/176
BSP SS 06036/17	17	37	50	3421/3230	1247/1056	2174	142/192	132	103/129	49	152/178
BSP SS 06036/18	18	37	50	3533/3342	1247/1056	2286	142/192	132	103/129	52	155/181
BSP SS 06036/19	19	45	60	3745/3514	1347/1116	2398	142/192	132	110/138	55	165/193
BSP SS 06036/20	20	45	60	3857/3626	1347/1116	2510	142/192	132	110/138	57	167/195
BSP SS 06036/21	21	45	60	3969/3738	1347/1116	2622	142/192	132	110/138	60	170/198
BSP SS 06036/22	22	45	60	4081/3850	1347/1116	2734	142/192	132	110/138	63	173/201
BSP SS 06036/23	23	52	70	4047	1201	2846	192	132	152	65	217
* BSP SS 06036/24	24	52	70	4159	1201	2958	192	132	152	104	256
* BSP SS 06036/25	25	52	70	4271	1201	3070	192	132	152	107	259
* BSP SS 06036/26	26	55	75	4468	1286	3182	192	132	170	109	279

Pump Type	Stages	Motor		Current (A)	m ³ /h l/s	Head (m)									
		kW	HP			0	10	20	30	40	45	50	55	55	
BSP SS 06036/16	16	37	50	66.6/61.4	Head (m)	322	322	298	267	237	223	208	190	190	
BSP SS 06036/17	17	37	50	66.6/61.4		342	343	317	284	252	237	221	202	202	
BSP SS 06036/18	18	37	50	66.6/61.4		362	363	336	300	267	251	234	214	214	
BSP SS 06036/19	19	45	60	82.1/74.8		382	383	354	317	282	265	247	226	226	
BSP SS 06036/20	20	45	60	82.1/74.8		402	403	373	334	297	279	260	238	238	
BSP SS 06036/21	21	45	60	82.1/74.8		422	423	391	350	312	293	273	250	250	
BSP SS 06036/22	22	45	60	82.1/74.8		442	443	410	367	326	307	286	262	262	
BSP SS 06036/23	23	52	70	85.3		462	464	429	384	341	321	299	274	274	
* BSP SS 06036/24	24	52	70	85.3		482	484	447	401	356	335	312	285	285	
* BSP SS 06036/25	25	52	70	85.3		502	504	466	417	371	349	325	297	297	
* BSP SS 06036/26	26	55	75	90.2		523	524	485	434	386	363	338	309	309	



Due to continuous improvement in design we reserve the right to amend specifications or data without prior notice.

(16 - 26 STAGES) **BSP SS 06036**

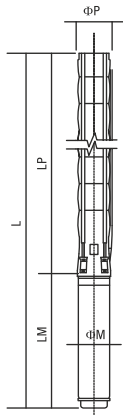
No. of vanes	6	Rotation	CCW
Outlet connection diameter	4" (inside threaded)	Revolution	3500 rpm
Pump outside diameter	144 mm	Shaft diameter	22 mm

The hydraulic working characteristics have been taken with water at 15 °C, at the atmospheric pressure of 1 bar and specific gravity is 1 gr/cm³



TECHNICAL SPECIFICATIONS

60Hz



Diffuser : Stainless steel (AISI 304L)
Impeller : Stainless steel (AISI 304L)
Pump shaft : Stainless steel (AISI 420)
Coupling : Stainless steel (AISI 420)
Strainer : Stainless steel (AISI 304)
Outlet connection diameter : 4" (inside threaded)

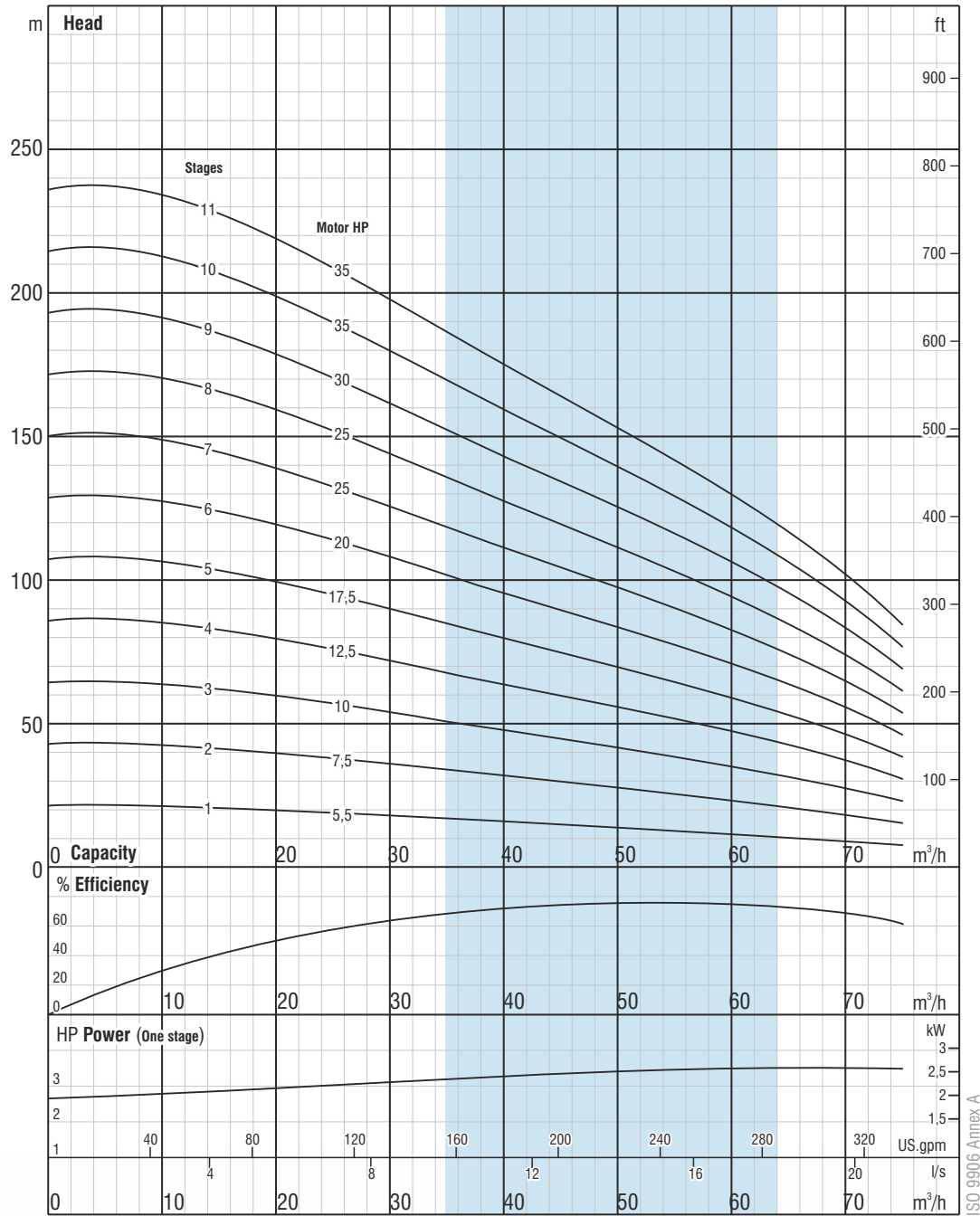
Max. sand content : 50 gr / m³
Valve cap : Stainless steel
Voltage : 460 V (+%6 / -%10)
Frequency : 60 Hz.
Max. water temperature : 50°C
Degree of protection : IP 68



Please contact us for optional materials.

Pump Type	Stages	Motor		Dimensions (mm)					Weight (kg)		
		kW	HP	L	LM	LP	ΦM	ΦP	Motor	Pump	Total
BSP SS 06045/01	1	4	5,5	912	530	382	95	144	16.2	7	23.2
BSP SS 06045/02	2	5,5	7,5	1149/1143	655/649	494	95/142	144	22.5/40	10	32.5/50
BSP SS 06045/03	3	7,5	10	1401/1284	795/678	606	95/142	144	28.8/43.5	12	40.8/55.5
BSP SS 06045/04	4	9,3	12,5	1476	758	718	142	144	50	15	65
BSP SS 06045/05	5	13	17,5	1681	851	830	142	144	60	18	78
BSP SS 06045/06	6	15	20	1853	911	942	142	144	65	20	85
BSP SS 06045/07	7	18,5	25	2027	973	1054	142	144	72	23	95
BSP SS 06045/08	8	18,5	25	2139	973	1166	142	144	72	26	98
BSP SS 06045/09	9	22	30	2284	1006	1278	142	144	76	28	104
BSP SS 06045/10	10	26,5	35	2496	1006	1390	142	144	87	31	118
BSP SS 06045/11	11	26,5	35	2608	1006	1502	142	144	87	34	121

Pump Type	Stages	Motor		Current (A)	m ³ /h I/s	Head (m)									
		kW	HP			0	20	35	40	45	50	55	60	65	
BSP SS 06045/01	1	4	5,5	7.2	Head (m)	18	17	14	14	13	12	11	10	9	
BSP SS 06045/02	2	5,5	7,5	12.6/11.3		43	40	34	32	30	28	26	24	21	
BSP SS 06045/03	3	7,5	10	17/14.2		64	60	51	48	45	42	39	35	32	
BSP SS 06045/04	4	9,3	12,5	17.4		86	80	68	64	60	56	51	47	43	
BSP SS 06045/05	5	13	17,5	23.4		107	99	85	80	74	69	64	59	53	
BSP SS 06045/06	6	15	20	27.3		129	119	102	95	89	83	77	71	64	
BSP SS 06045/07	7	18,5	25	34.5		150	139	119	111	104	97	90	83	74	
BSP SS 06045/08	8	18,5	25	34.5		171	159	136	127	119	111	103	94	85	
BSP SS 06045/09	9	22	30	40.1		193	179	152	143	134	125	116	106	96	
BSP SS 06045/10	10	26,5	35	47.1		214	199	169	159	149	139	129	118	106	
BSP SS 06045/11	11	26,5	35	47.1		236	219	186	175	164	153	142	130	117	



Due to continuous improvement in design we reserve the right to amend specifications or data without prior notice.

(01 - 11 STAGES) BSP SS 06045

No. of vanes
6

Outlet connection diameter
4" (inside threaded)

Pump outside diameter
144 mm

Rotation
CCW

Revolution
3500 rpm

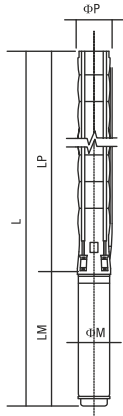
Shaft diameter
22 mm



The hydraulic working characteristics have been taken with water at 15 °C, at the atmospheric pressure of 1 bar and specific gravity is 1 gr/cm³

TECHNICAL SPECIFICATIONS

60Hz



Diffuser : Stainless steel (AISI 304L)
Impeller : Stainless steel (AISI 304L)
Pump shaft : Stainless steel (AISI 420)
Coupling : Stainless steel (AISI 420)
Strainer : Stainless steel (AISI 304)
Outlet connection diameter : 4" (inside threaded)

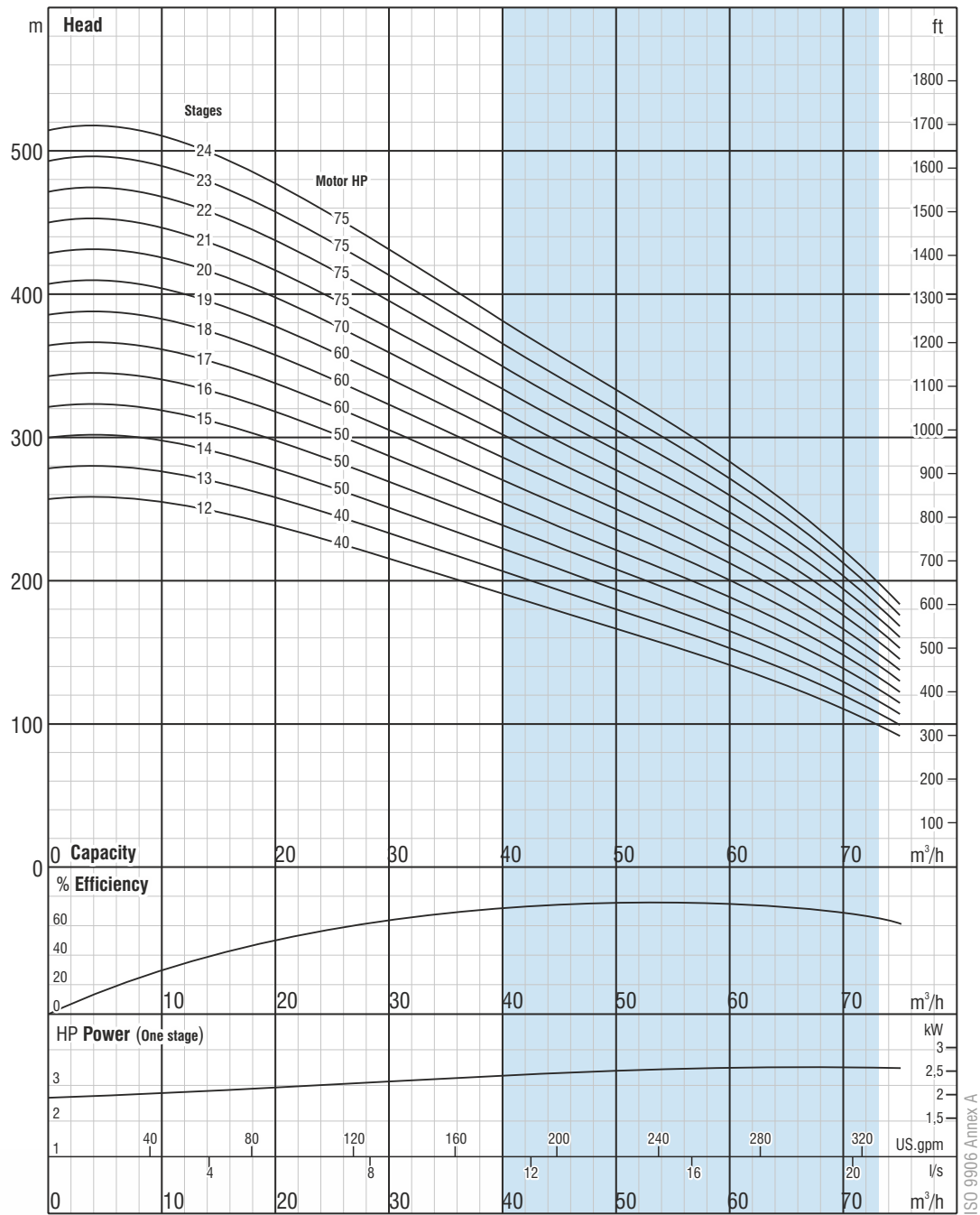
Max. sand content : 50 gr / m³
Valve cap : Stainless steel
Voltage : 460 V (+%6 / -%10)
Frequency : 60 Hz.
Max. water temperature : 50°C
Degree of protection : IP 68



Please contact us for optional materials.

Pump Type	Stages	Motor		Dimensions (mm)					Weight (kg)		
		kW	HP	L	LM	LP	ΦM	ΦP	Motor	Pump	Total
BSP SS 06045/12	12	30	40	2831/2610	1217/996	1614	142/192	144	98/120	36	134/156
BSP SS 06045/13	13	30	40	2943/2722	1217/996	1726	142/192	144	98/120	39	137/159
BSP SS 06045/14	14	37	50	3085/2894	1247/1056	1838	142/192	144	103/129	42	145/171
BSP SS 06045/15	15	37	50	3197/3006	1247/1056	1950	142/192	144	103/129	44	147/173
BSP SS 06045/16	16	37	50	3309/3118	1247/1056	2062	142/192	144	103/129	47	150/176
BSP SS 06045/17	17	45	60	3521/3290	1347/1116	2174	142/192	144	110/138	49	159/187
BSP SS 06045/18	18	45	60	3633/3402	1347/1116	2286	142/192	144	110/138	52	162/190
BSP SS 06045/19	19	45	60	3745/3514	1347/1116	2398	142/192	144	110/138	55	165/193
BSP SS 06045/20	20	52	70	3711	1201	2510	192	144	152	57	209
BSP SS 06045/21	21	55	75	3908	1286	2622	192	144	170	60	230
BSP SS 06045/22	22	55	75	4020	1286	2734	192	144	170	63	233
BSP SS 06045/23	23	55	75	4132	1286	2846	192	144	170	65	235
* BSP SS 06045/24	24	55	75	4244	1286	2958	192	144	170	99	269

Pump Type	Stages	Motor		Current (A)	m ³ /h l/s	0	20	35	40	45	50	55	60	65
		kW	HP			0,00	5,56	9,72	11,11	12,50	13,89	15,28	16,67	18,06
BSP SS 06045/12	12	30	40	53.4/51	Head (m)	257	239	203	191	179	167	154	142	128
BSP SS 06045/13	13	30	40	53.4/51		279	259	220	207	194	181	167	153	138
BSP SS 06045/14	14	37	50	66.6/61.4		300	279	237	223	209	194	180	165	149
BSP SS 06045/15	15	37	50	66.6/61.4		321	298	254	239	223	208	193	177	159
BSP SS 06045/16	16	37	50	66.6/61.4		343	318	271	255	238	222	206	189	170
BSP SS 06045/17	17	45	60	82.1/74.8		364	338	288	271	253	236	219	201	181
BSP SS 06045/18	18	45	60	82.1/74.8		386	358	305	286	268	250	232	212	191
BSP SS 06045/19	19	45	60	82.1/74.8		407	378	322	302	283	264	245	224	202
BSP SS 06045/20	20	52	70	85.3		429	398	339	318	298	278	257	236	213
BSP SS 06045/21	21	55	75	90.2		450	418	356	334	313	292	270	248	223
BSP SS 06045/22	22	55	75	90.2		472	438	373	350	328	306	283	260	234
BSP SS 06045/23	23	55	75	90.2		493	458	390	366	343	320	296	271	244
* BSP SS 06045/24	24	55	75	90.2		514	477	407	382	358	333	309	283	255



Due to continuous improvement in design we reserve the right to amend specifications or data without prior notice.

(12 - 24 STAGES) BSP SS 06045

No. of vanes
6

Outlet connection diameter
4" (inside threaded)

Pump outside diameter
144 mm

Rotation
CCW

Revolution
3500 rpm

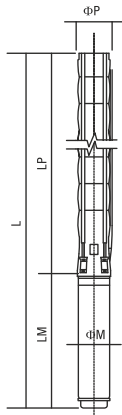
Shaft diameter
22 mm



The hydraulic working characteristics have been taken with water at 15 °C, at the atmospheric pressure of 1 bar and specific gravity is 1 gr/cm³

TECHNICAL SPECIFICATIONS

60Hz



Diffuser : Stainless steel (AISI 304L)
Impeller : Stainless steel (AISI 304L)
Pump shaft : Stainless steel (AISI 420)
Coupling : Stainless steel (AISI 420)
Strainer : Stainless steel (AISI 304)
Outlet connection diameter : 4" (inside threaded)

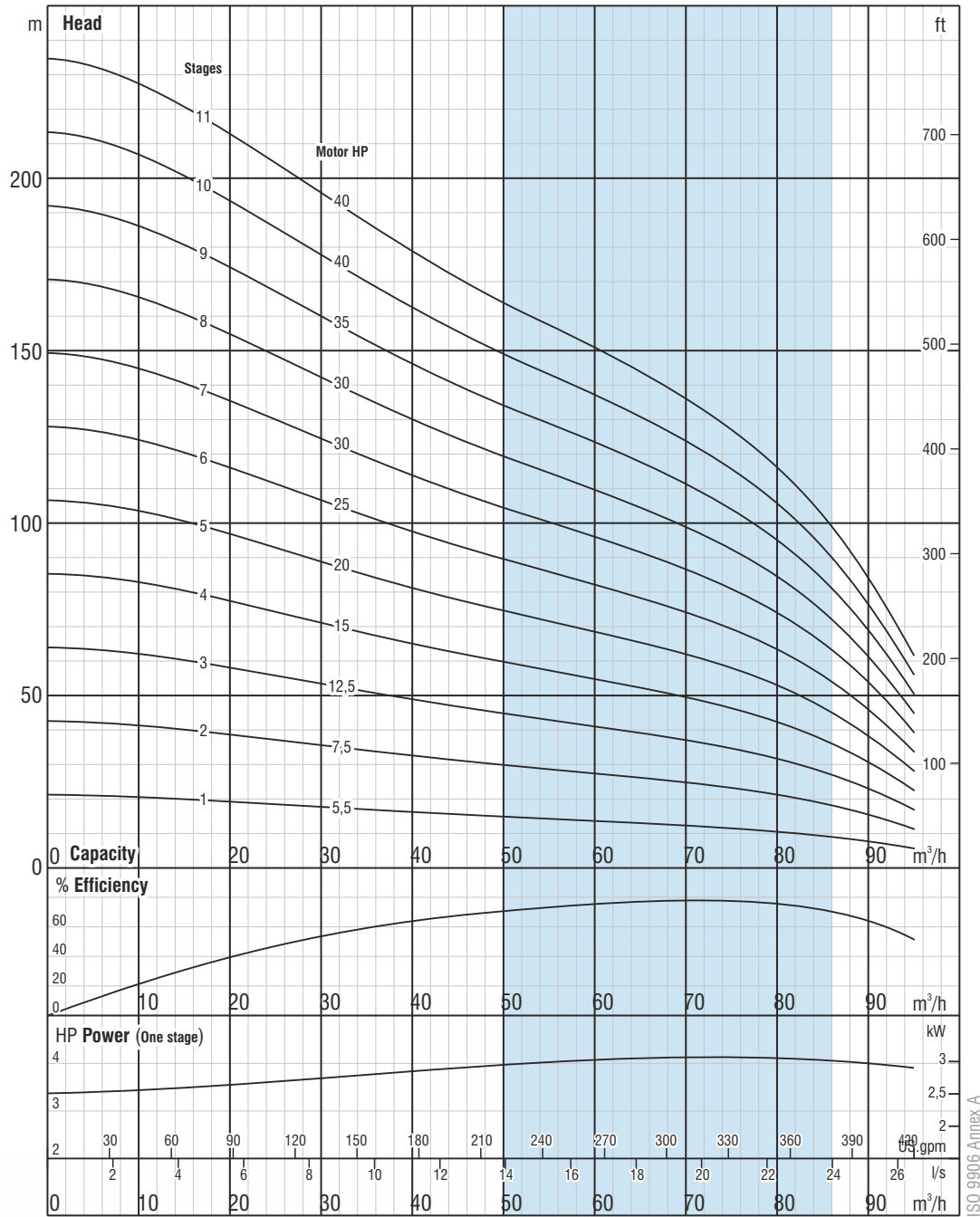
Max. sand content : 50 gr / m³
Valve cap : Stainless steel
Voltage : 460 V (+%6 / -%10)
Frequency : 60 Hz.
Max. water temperature : 50°C
Degree of protection : IP 68



Please contact us for optional materials.

Pump Type	Stages	Motor		Dimensions (mm)					Weight (kg)		
		kW	HP	L	LM	LP	ΦM	ΦP	Motor	Pump	Total
BSP SS 06060/01	1	4	5,5	982/1031	600/649	382	95/142	144	19.8/40	7	26.8/47
BSP SS 06060/02	2	5,5	7,5	1149/1143	655/649	494	95/142	144	22.5/40	10	32.5/50
BSP SS 06060/03	3	9,3	12,5	1364	758	606	142	144	50	12	62
BSP SS 06060/04	4	11	15	1518	800	718	142	144	55	15	70
BSP SS 06060/05	5	15	20	1741	911	830	142	144	65	18	83
BSP SS 06060/06	6	18,5	25	1915	973	942	142	144	72	20	92
BSP SS 06060/07	7	22	30	2060	1006	1054	142	144	76	23	99
BSP SS 06060/08	8	22	30	2172	1006	1166	142	144	76	26	102
BSP SS 06060/09	9	26,5	35	2384	1006	1278	142	144	87	28	115
BSP SS 06060/10	10	30	40	2607/2386	1217/996	1390	142/192	144	98/120	31	129/151
BSP SS 06060/11	11	30	40	2719/2498	1217/996	1502	142/192	144	98/120	34	132/154

Pump Type	Stages	Motor		Current (A)	m ³ /h l/s	Head (m)									
		kW	HP			0	20	40	60	65	70	75	80	85	
BSP SS 06060/01	1	4	5,5	9.5/8.4	Head (m)	21	19	16	14	13	12	12	11	9	
BSP SS 06060/02	2	5,5	7,5	12.6/11.3		43	39	33	27	26	25	23	21	19	
BSP SS 06060/03	3	9,3	12,5	17.4		64	58	49	41	39	37	35	32	28	
BSP SS 06060/04	4	11	15	19.6		85	77	65	55	52	50	46	42	37	
BSP SS 06060/05	5	15	20	27.3		107	97	81	68	65	62	58	53	46	
BSP SS 06060/06	6	18,5	25	34.5		128	116	98	82	78	74	69	63	56	
BSP SS 06060/07	7	22	30	40.1		149	135	114	96	92	87	81	74	65	
BSP SS 06060/08	8	22	30	40.1		170	155	130	110	105	99	93	84	74	
BSP SS 06060/09	9	26,5	35	47.1		192	174	146	123	118	111	104	95	84	
BSP SS 06060/10	10	30	40	53.4/51		213	194	163	137	131	124	116	106	93	
BSP SS 06060/11	11	30	40	53.4/51		234	213	179	151	144	136	127	116	102	



Due to continuous improvement in design we reserve the right to amend specifications or data without prior notice.

ISO 9906 Annex A

(01 - 11 STAGES) BSP SS 06060

No. of vanes
6

Outlet connection diameter
4" (inside threaded)

Pump outside diameter
144 mm

Rotation
CCW

Revolution
3500 rpm

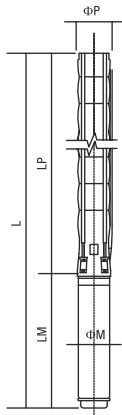
Shaft diameter
22 mm



The hydraulic working characteristics have been taken with water at 15 °C, at the atmospheric pressure of 1 bar and specific gravity is 1 gr/cm³

TECHNICAL SPECIFICATIONS

60Hz



Diffuser : Stainless steel (AISI 304L)
Impeller : Stainless steel (AISI 304L)
Pump shaft : Stainless steel (AISI 420)
Coupling : Stainless steel (AISI 420)
Strainer : Stainless steel (AISI 304)
Outlet connection diameter : 4" (inside threaded)

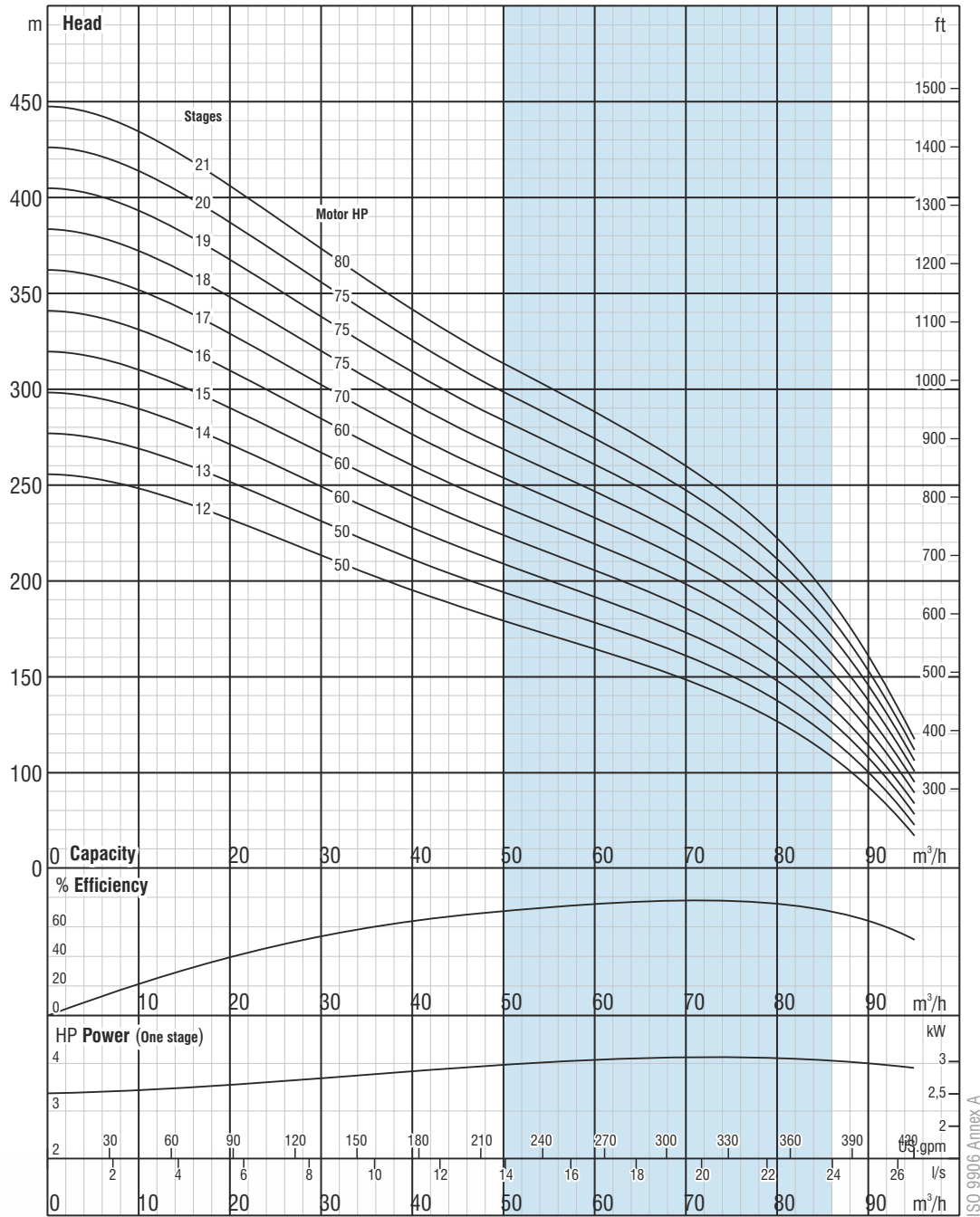
Max. sand content : 50 gr / m³
Valve cap : Stainless steel
Voltage : 460 V (+%6 / -%10)
Frequency : 60 Hz.
Max. water temperature : 50°C
Degree of protection : IP 68



Please contact us for optional materials.

Pump Type	Stages	Motor		Dimensions (mm)					Weight (kg)		
		kW	HP	L	LM	LP	ΦM	ΦP	Motor	Pump	Total
BSP SS 06060/12	12	37	50	2861/2670	1247/1056	142/192	142/192	144	103/129	36	139/165
BSP SS 06060/13	13	37	50	2973/2782	1247/1056	142/192	142/192	144	103/129	39	142/168
BSP SS 06060/14	14	45	60	3185/2954	1347/1116	142/192	142/192	144	110/138	42	152/180
BSP SS 06060/15	15	45	60	3297/3066	1347/1116	142/192	142/192	144	110/138	44	154/182
BSP SS 06060/16	16	45	60	3409/3178	1347/1116	142/192	142/192	144	110/138	47	157/185
BSP SS 06060/17	17	52	70	3375	1201	192	192	144	152	50	202
BSP SS 06060/18	18	55	75	3572	1286	192	192	144	170	52	222
BSP SS 06060/19	19	55	75	3684	1286	192	192	144	170	55	225
BSP SS 06060/20	20	55	75	3796	1286	192	192	144	170	58	228
BSP SS 06060/21	21	60	80	3908	1286	192	192	144	170	60	230

Pump Type	Stages	Motor		Current (A)	m ³ /h l/s	Head (m)									
		kW	HP			0	20	40	60	65	70	75	80	85	
BSP SS 06060/12	12	37	50	66.6/61.4	Head (m)	256	232	195	164	157	149	139	127	111	
BSP SS 06060/13	13	37	50	66.6/61.4		277	252	211	178	170	161	150	137	121	
BSP SS 06060/14	14	45	60	82.1/74.8		298	271	228	192	183	173	162	148	130	
BSP SS 06060/15	15	45	60	82.1/74.8		320	290	244	205	196	186	173	158	139	
BSP SS 06060/16	16	45	60	82.1/74.8		341	310	260	219	209	198	185	169	149	
BSP SS 06060/17	17	52	70	85.3		362	329	276	233	222	210	197	180	158	
BSP SS 06060/18	18	55	75	90.2		384	348	293	247	235	223	208	190	167	
BSP SS 06060/19	19	55	75	90.2		405	368	309	260	248	235	220	201	177	
BSP SS 06060/20	20	55	75	90.2		426	387	325	274	261	248	231	211	186	
BSP SS 06060/21	21	60	80	99.6		447	406	341	288	275	260	243	222	195	



Due to continuous improvement in design we reserve the right to amend specifications or data without prior notice.

ISO 9906 Annex A

(12 - 21 STAGES) BSP SS 06060

No. of vanes
6

Outlet connection diameter
4" (inside threaded)

Pump outside diameter
144 mm

Rotation
CCW

Revolution
3500 rpm

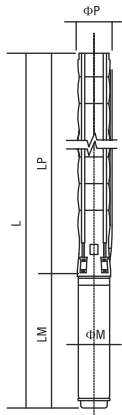
Shaft diameter
22 mm



The hydraulic working characteristics have been taken with water at 15 °C, at the atmospheric pressure of 1 bar and specific gravity is 1 gr/cm³

TECHNICAL SPECIFICATIONS

60Hz



Diffuser : Stainless steel (AISI 304L)
Impeller : Stainless steel (AISI 304L)
Pump shaft : Stainless steel (AISI 420)
Coupling : Stainless steel (AISI 420)
Strainer : Stainless steel (AISI 304)
Outlet connection diameter : 5" (inside threaded)

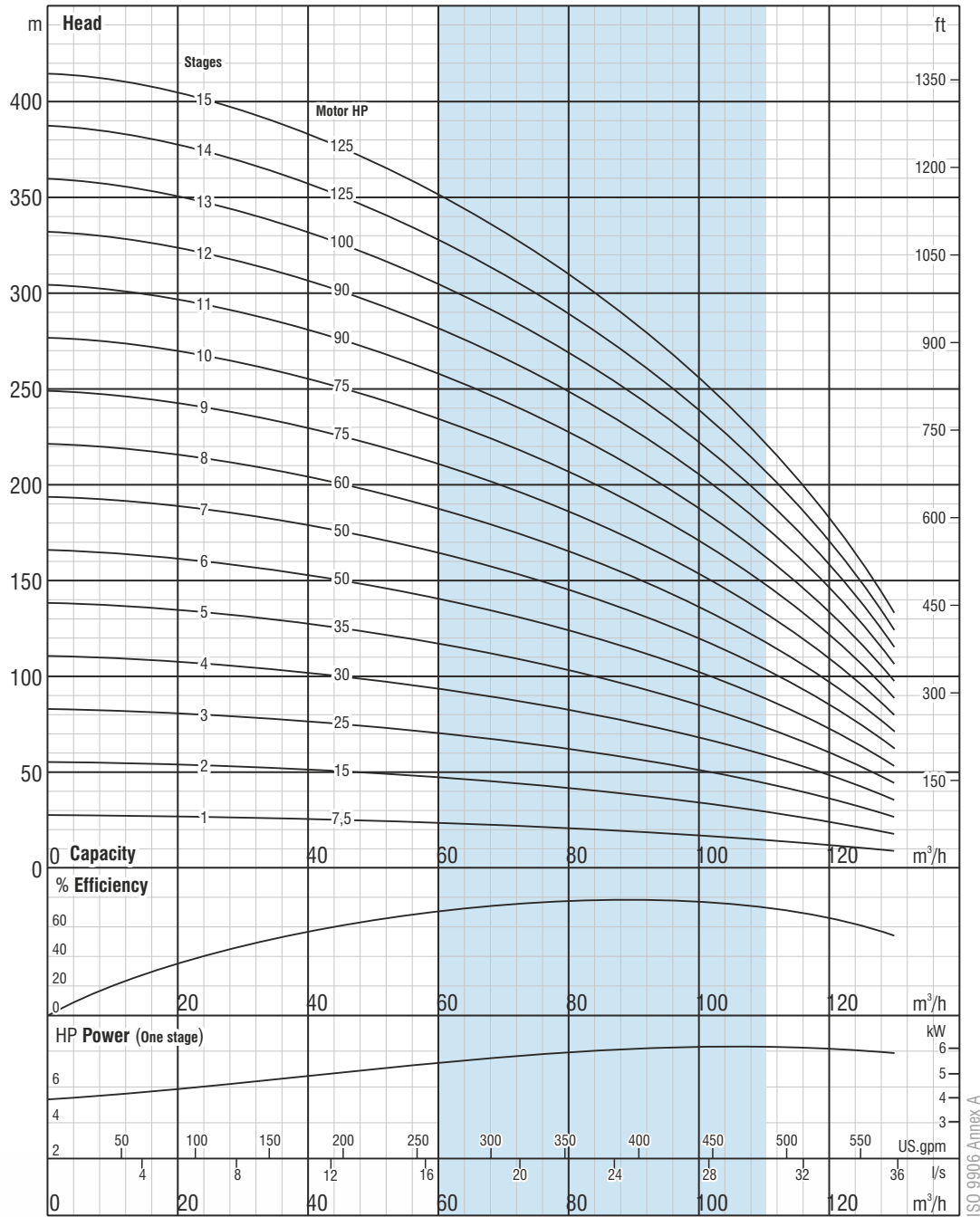
Max. sand content : 50 gr / m³
Valve cap : Stainless steel
Voltage : 460 V (+%6 / -%10)
Frequency : 60 Hz.
Max. water temperature : 50°C
Degree of protection : IP 68



Please contact us for optional materials.

Pump Type	Stages	Motor		Dimensions (mm)					Weight (kg)		
		kW	HP	L	LM	LP	ΦM	ΦP	Motor	Pump	Total
BSP SS 07075/01	1	5,5	7,5	1220	649	571	142	172	40	26	66
BSP SS 07075/02	2	11	15	1499	800	699	142	172	55	30	85
BSP SS 07075/03	3	18,5	25	1800	973	827	142	172	72	34	106
BSP SS 07075/04	4	22	30	1961	1006	955	142	172	76	38	114
BSP SS 07075/05	5	26,5	35	2189	1106	1083	142	172	87	42	129
BSP SS 07075/06	6	37	50	2458/2267	1247/1056	1211	142/192	172	103/129	46	149/175
BSP SS 07075/07	7	37	50	2586/2395	1247/1056	1339	142/192	172	103/129	50	153/179
BSP SS 07075/08	8	45	60	2814/2583	1347/1116	1467	142/192	172	110/138	54	164/192
BSP SS 07075/09	9	55	75	2881	1286	1595	192	172	170	58	196
BSP SS 07075/10	10	55	75	3009	1286	1723	192	172	170	62	200
BSP SS 07075/11	11	67	90	3192	1341	1851	192	172	185	66	226
BSP SS 07075/12	12	67	90	3320	1341	1979	192	172	185	70	230
BSP SS 07075/13	13	75	100	3473/3357	1366/1250	2107	192/231	172	186/200	74	260/274
BSP SS 07075/14	14	92	125	3706/3605	1471/1370	2235	192/231	172	210/256	78	288/334
BSP SS 07075/15	15	92	125	3834/3733	1471/1370	2363	192/231	172	210/256	82	292/338

Pump Type	Stages	Motor		Current (A)	m ³ /h l/s	Head (m)												
		kW	HP			0	30	60	70	80	90	100	110	120				
BSP SS 07075/01	1	5,5	7,5	11.3		28	26	23	22	21	19	17	15	12				
BSP SS 07075/02	2	11	15	19.6		55	53	47	44	41	38	34	30	24				
BSP SS 07075/03	3	18,5	25	34.5		83	79	70	66	62	57	51	44	36				
BSP SS 07075/04	4	22	30	40.1		111	105	94	89	83	76	68	59	48				
BSP SS 07075/05	5	26,5	35	47.1		138	132	117	111	104	95	86	74	61				
BSP SS 07075/06	6	37	50	66.6/61.4		166	158	141	133	124	114	103	89	73				
BSP SS 07075/07	7	37	50	66.6/61.4		194	184	164	155	145	133	120	104	85				
BSP SS 07075/08	8	45	60	82.1/74.8		221	211	187	177	166	152	137	119	97				
BSP SS 07075/09	9	55	75	90.2		249	237	211	199	186	171	154	133	109				
BSP SS 07075/10	10	55	75	90.2		277	263	234	222	207	190	171	148	121				
BSP SS 07075/11	11	67	90	111.2		304	290	258	244	228	210	188	163	133				
BSP SS 07075/12	12	67	90	111.2		332	316	281	266	249	229	205	178	145				
BSP SS 07075/13	13	75	100	123.1/121.8		360	342	304	288	269	248	222	193	158				
BSP SS 07075/14	14	92	125	152.8/149.4		387	369	328	310	290	267	240	208	170				
BSP SS 07075/15	15	92	125	152.8/149.4		415	395	351	332	311	286	257	222	182				



Due to continuous improvement in design we reserve the right to amend specifications or data without prior notice.

(01 - 15 STAGES) **BSP SS 07075**

No. of vanes
6

Outlet connection diameter
5" (inside threaded)

Pump outside diameter
172 mm

Rotation
CCW

Revolution
3500 rpm

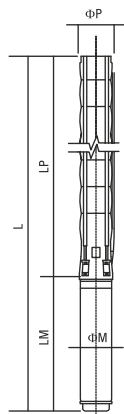
Shaft diameter
25,4 mm

The hydraulic working characteristics have been taken with water at 15 °C, at the atmospheric pressure of 1 bar and specific gravity is 1 gr/cm³



TECHNICAL SPECIFICATIONS

60Hz



Diffuser : Stainless steel (AISI 304L)
Impeller : Stainless steel (AISI 304L)
Pump shaft : Stainless steel (AISI 420)
Coupling : Stainless steel (AISI 420)
Strainer : Stainless steel (AISI 304)
Outlet connection diameter : 5" (inside threaded)

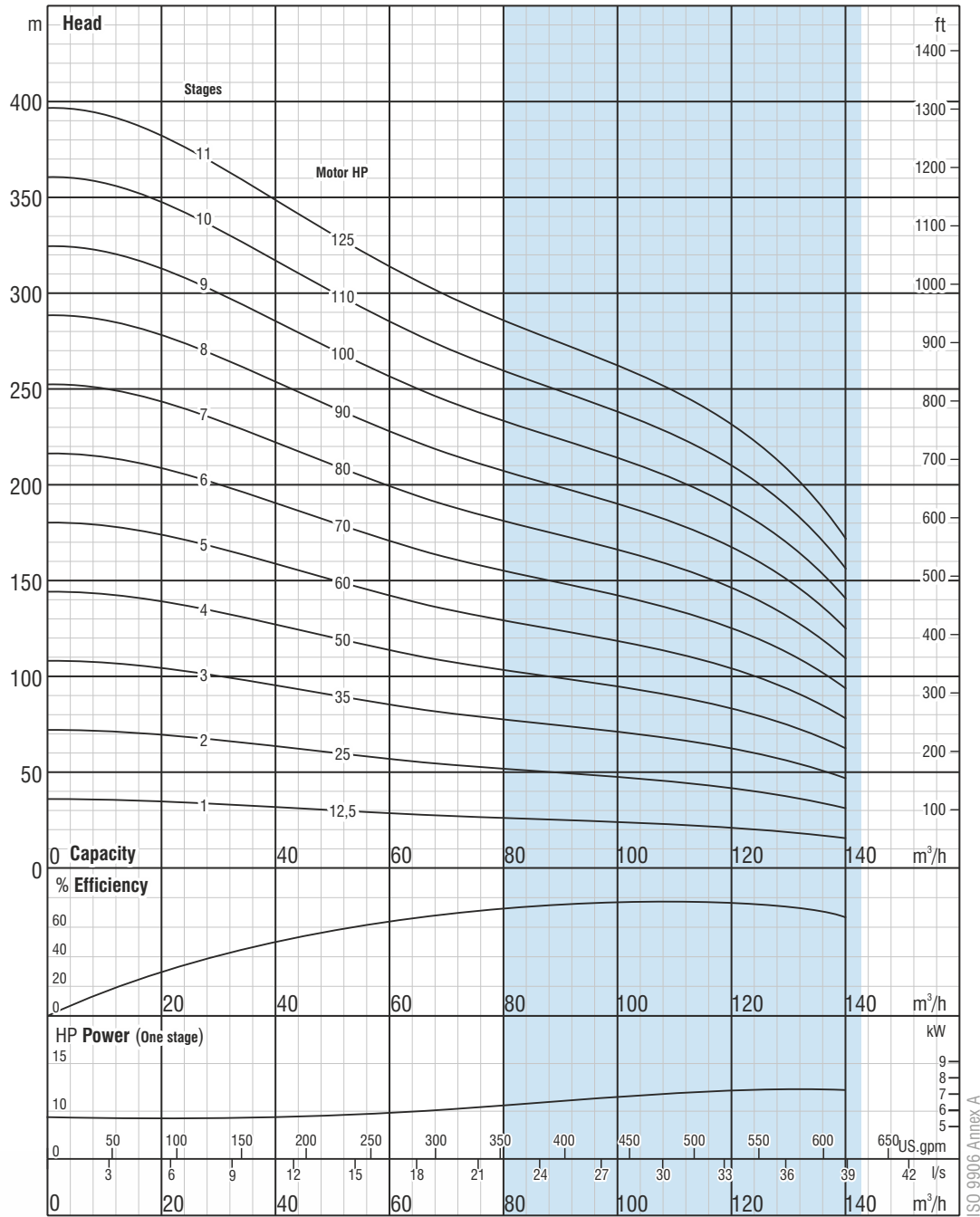
Max. sand content : 50 gr / m³
Valve cap : Stainless steel
Voltage : 460 V (+%6 / -%10)
Frequency : 60 Hz.
Max. water temperature : 50°C
Degree of protection : IP 68



Please contact us for optional materials.

Pump Type	Stages	Motor		Dimensions (mm)					Weight (kg)		
		kW	HP	L	LM	LP	ΦM	ΦP	Motor	Pump	Total
BSP SS 07095/01	1	9,3	12,5	1329	758	571	142	172	50	26	76
BSP SS 07095/02	2	18,5	25	1672	973	699	142	172	72	30	102
BSP SS 07095/03	3	26,5	35	1933	1106	827	142	172	87	34	121
BSP SS 07095/04	4	37	50	2202/2011	1247/1056	955	142/192	172	103/129	38	141/167
BSP SS 07095/05	5	45	60	2430/2199	1347/1116	1083	172/192	172	110/138	42	152/180
BSP SS 07095/06	6	52	70	2412	1201	1211	192	172	152	46	198
BSP SS 07095/07	7	60	80	2625	1286	1339	192	172	170	50	220
BSP SS 07095/08	8	67	90	2808	1341	1467	192	172	185	54	239
BSP SS 07095/09	9	75	100	2961/2845	1366/1250	1595	192	172	186/200	58	244/258
BSP SS 07095/10	10	81	110	3114/3033	1391/1310	1723	192/231	172	195/228	62	257/290
BSP SS 07095/11	11	92	125	3322/3221	1471/1370	1851	192/231	172	210/256	66	276/322

Pump Type	Stages	Motor		Current (A)	m ³ /h l/s	Head (m)									
		kW	HP			0	20	40	70	90	100	110	120	130	
BSP SS 07095/01	1	9,3	12,5	17.4	Head (m)	0,00	5,56	11,11	19,44	25,00	27,78	30,56	33,33	36,11	
BSP SS 07095/02	2	18,5	25	34.5		36	35	32	27	25	24	23	21	19	
BSP SS 07095/03	3	26,5	35	47.1		72	69	63	54	50	48	45	42	38	
BSP SS 07095/04	4	37	50	66.6/61.4		108	104	95	81	75	71	68	63	56	
BSP SS 07095/05	5	45	60	82.1/74.8		144	139	127	109	99	95	90	84	75	
BSP SS 07095/06	6	52	70	85.3		180	174	158	136	124	119	113	105	94	
BSP SS 07095/07	7	60	80	99.6		216	208	190	163	149	143	136	126	113	
BSP SS 07095/08	8	67	90	111.2		252	243	222	190	174	167	158	147	132	
BSP SS 07095/09	9	75	100	123.1/121.8		288	278	253	217	199	191	181	168	150	
BSP SS 07095/10	10	81	110	134.4/131.5		324	312	285	244	224	214	203	189	169	
BSP SS 07095/11	11	92	125	152.8/149.4		360	347	317	271	249	238	226	210	188	
					396	382	348	299	274	262	249	231	207		



Due to continuous improvement in design we reserve the right to amend specifications or data without prior notice.

(01 - 15 STAGES) **BSP SS 07095**

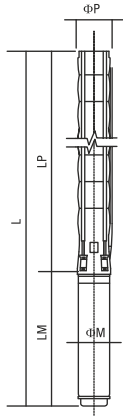
No. of vanes	6	Rotation	CCW
Outlet connection diameter	5" (inside threaded)	Revolution	3500 rpm
Pump outside diameter	172 mm	Shaft diameter	25,4 mm

The hydraulic working characteristics have been taken with water at 15 °C, at the atmospheric pressure of 1 bar and specific gravity is 1 gr/cm³



TECHNICAL SPECIFICATIONS

60Hz



Diffuser : Stainless steel (AISI 304L)
Impeller : Stainless steel (AISI 304L)
Pump shaft : Stainless steel (AISI 420)
Coupling : Stainless steel (AISI 420)
Strainer : Stainless steel (AISI 304)
Outlet connection diameter : 5" (inside threaded)

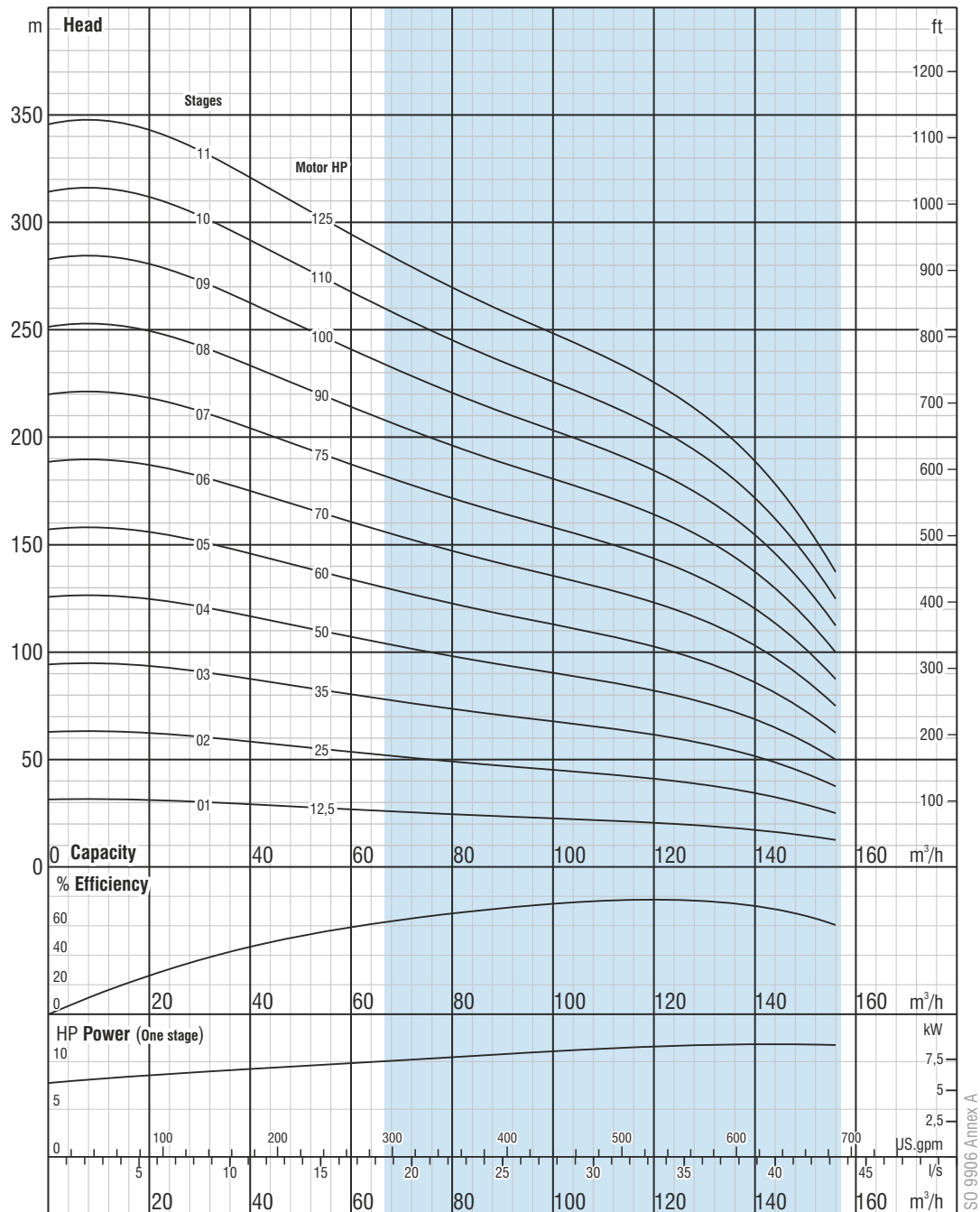
Max. sand content : 50 gr / m³
Valve cap : Stainless steel
Voltage : 460 V (+%6 / -%10)
Frequency : 60 Hz.
Max. water temperature : 50°C
Degree of protection : IP 68



Please contact us for optional materials.

Pump Type	Stages	Motor		Dimensions (mm)					Weight (kg)		
		kW	HP	L	LM	LP	ΦM	ΦP	Motor	Pump	Total
BSP SS 07105/01	1	9,3	12,5	1329	758	571	142	172	50	26	76
BSP SS 07105/02	2	18,5	25	1672	973	699	142	172	72	30	102
BSP SS 07105/03	3	26,5	35	1933	1106	827	142	172	87	34	121
BSP SS 07105/04	4	37	50	2202/2011	1247/1056	955	142/192	172	103/129	38	141/167
BSP SS 07105/05	5	45	60	2430/2199	1347/1116	1083	142/192	172	110/138	42	152/180
BSP SS 07105/06	6	52	70	2412	1201	1211	172	172	152	46	198
BSP SS 07105/07	7	55	75	2625	1286	1339	172	172	170	50	220
BSP SS 07105/08	8	67	90	2808	1341	1467	172	172	185	54	239
BSP SS 07105/09	9	75	100	2961/2845	1366/1250	1595	192/231	172	186/200	58	244/258
BSP SS 07105/10	10	81	110	3114/3033	1391/1310	1723	192/231	172	195/228	62	257/290
BSP SS 07105/11	11	92	125	3322/3221	1471/1370	1851	192/231	172	210/256	66	276/322

Pump Type	Stages	Motor		Current (A)	m ³ /h l/s	Head (m)							
		kW	HP			0	30	60	90	100	120	140	150
BSP SS 07105/01	1	9,3	12,5	17.4	Head (m)	31	30	27	24	23	21	17	15
BSP SS 07105/02	2	18,5	25	34.5		63	61	53	47	45	41	34	29
BSP SS 07105/03	3	26,5	35	47.1/45		94	91	80	71	68	62	52	44
BSP SS 07105/04	4	37	50	66.6/61.4		126	121	107	94	90	82	69	58
BSP SS 07105/05	5	45	60	82.1/74.8		157	151	134	118	113	103	86	73
BSP SS 07105/06	6	52	70	85.3		189	182	160	141	135	123	103	87
BSP SS 07105/07	7	55	75	90.2		220	212	187	165	158	144	120	102
BSP SS 07105/08	8	67	90	111.2		251	242	214	188	181	164	137	116
BSP SS 07105/09	9	75	100	123.1/121.8		283	273	240	212	203	185	155	131
BSP SS 07105/10	10	81	110	134.4/131.5		314	303	267	235	226	205	172	145
BSP SS 07105/11	11	92	125	152.8/149.4		346	333	294	259	248	226	189	160



Due to continuous improvement in design we reserve the right to amend specifications or data without prior notice.

(01 - 11 STAGES) BSP SS 07105

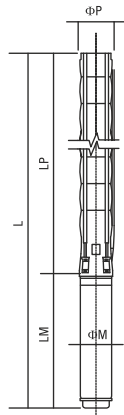
No. of vanes	6	Rotation	CCW
Outlet connection diameter	5" (inside threaded)	Revolution	3500 rpm
Pump outside diameter	172 mm	Shaft diameter	25,4 mm

The hydraulic working characteristics have been taken with water at 15 °C, at the atmospheric pressure of 1 bar and specific gravity is 1 gr/cm³



TECHNICAL SPECIFICATIONS

60Hz



Diffuser : Stainless steel (AISI 304L)
Impeller : Stainless steel (AISI 304L)
Pump shaft : Stainless steel (AISI 420)
Coupling : Stainless steel (AISI 420)
Strainer : Stainless steel (AISI 304)
Outlet connection diameter : 6" (inside threaded)

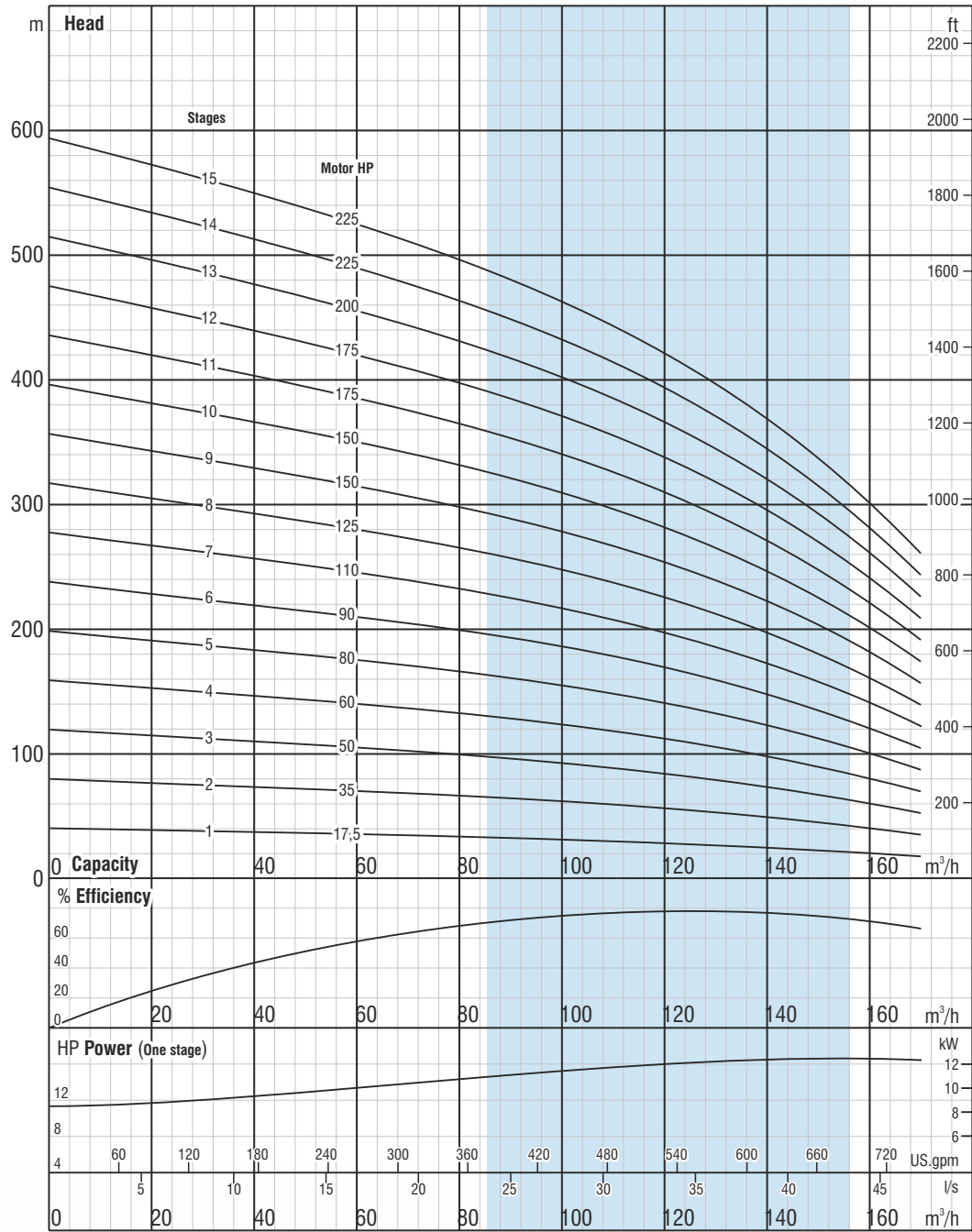
Max. sand content : 50 gr / m³
Valve cap : Stainless steel
Voltage : 460 V (+%6 / -%10)
Frequency : 60 Hz.
Max. water temperature : 50°C
Degree of protection : IP 68



Please contact us for optional materials.

Pump Type	Stages	Motor		Dimensions (mm)					Weight (kg)		
		kW	HP	L	LM	LP	ΦM	ΦP	Motor	Pump	Total
BSP SS 08110/01	1	13	17,5	1537	851	686	142	213	60	32	92
BSP SS 08110/02	2	26,5	35	1948	1106	842	142	213	87	38	125
BSP SS 08110/03	3	37	50	2244/2053	1247/1056	997	142/192	213	103/129	45	148/174
BSP SS 08110/04	4	45	60	2500/2269	1347/1116	1153	142/192	213	110/138	51	161/189
BSP SS 08110/05	5	60	80	2595	1286	1309	192	213	170	57	227
BSP SS 08110/06	6	67	90	2806	1341	1465	192	213	185	64	249
BSP SS 08110/07	7	81	110	2930	1310	1620	231	213	228	70	298
BSP SS 08110/08	8	92	125	3146	1370	1776	231	213	256	76	332
* BSP SS 08110/09	9	110	150	3362	1430	1932	231	213	284	121	405
* BSP SS 08110/10	10	110	150	3517	1430	2087	231	213	284	127	411
* BSP SS 08110/11	11	129	175	3753	1510	2243	231	213	311	133	444
* BSP SS 08110/12	12	129	175	3909	1510	2399	231	213	311	139	450
* BSP SS 08110/13	13	147	200	4164	1610	2554	231	213	338	145	483
* BSP SS 08110/14	14	166	225	4450	1740	2710	231	213	370	151	521
* BSP SS 08110/15	15	166	225	4606	1740	2866	231	213	370	157	527

Pump Type	Stages	Motor		Current (A)	m ³ /h l/s	Head (m)																	
		kW	HP			0	50	100	110	120	130	140	150	160									
BSP SS 08110/01	1	13	17,5	23.4	Head (m)	0,00	13,89	27,78	30,56	33,33	36,11	38,89	41,67	44,44	40	36	31	30	28	31	25	22	20
BSP SS 08110/02	2	26,5	35	47.1		79	72	62	60	57	61	49	44	40	79	72	62	60	57	61	49	44	40
BSP SS 08110/03	3	37	50	66.6/61.4		119	108	93	89	85	92	74	67	59	119	108	93	89	85	92	74	67	59
BSP SS 08110/04	4	45	60	82.1/74.8		158	143	124	119	113	122	98	89	79	158	143	124	119	113	122	98	89	79
BSP SS 08110/05	5	60	80	99.6		198	179	155	149	142	153	123	111	99	198	179	155	149	142	153	123	111	99
BSP SS 08110/06	6	67	90	111.2		237	215	185	179	170	184	147	133	119	237	215	185	179	170	184	147	133	119
BSP SS 08110/07	7	81	110	131.5		277	251	216	208	199	214	172	156	139	277	251	216	208	199	214	172	156	139
BSP SS 08110/08	8	92	125	149.4		316	287	247	238	227	245	197	178	158	316	287	247	238	227	245	197	178	158
* BSP SS 08110/09	9	110	150	180.5		356	323	278	268	255	275	221	200	178	356	323	278	268	255	275	221	200	178
* BSP SS 08110/10	10	110	150	180.5		395	358	309	298	284	306	246	222	198	395	358	309	298	284	306	246	222	198
* BSP SS 08110/11	11	129	175	207		435	394	340	327	312	336	270	245	218	435	394	340	327	312	336	270	245	218
* BSP SS 08110/12	12	129	175	207		474	430	371	357	340	367	295	267	238	474	430	371	357	340	367	295	267	238
* BSP SS 08110/13	13	147	200	236		514	466	402	387	369	398	319	289	257	514	466	402	387	369	398	319	289	257
* BSP SS 08110/14	14	166	225	266.2		553	502	433	417	397	428	344	311	277	553	502	433	417	397	428	344	311	277
* BSP SS 08110/15	15	166	225	266.2		593	538	464	447	425	459	368	334	297	593	538	464	447	425	459	368	334	297



Due to continuous improvement in design we reserve the right to amend specifications or data without prior notice.

ISO 9906 Annex A

(01 - 15 STAGES) BSP SS 08110

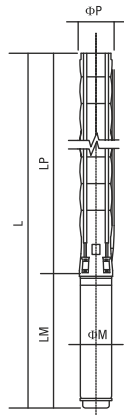
No. of vanes	6	Rotation	CCW
Outlet connection diameter	6" (inside threaded)	Revolution	3500 rpm
Pump outside diameter	226 mm	Shaft diameter	30,16 mm



The hydraulic working characteristics have been taken with water at 15 °C, at the atmospheric pressure of 1 bar and specific gravity is 1 gr/cm³

TECHNICAL SPECIFICATIONS

60Hz



Diffuser : Stainless steel (AISI 304L)
Impeller : Stainless steel (AISI 304L)
Pump shaft : Stainless steel (AISI 420)
Coupling : Stainless steel (AISI 420)
Strainer : Stainless steel (AISI 304)
Outlet connection diameter : 6" (inside threaded)

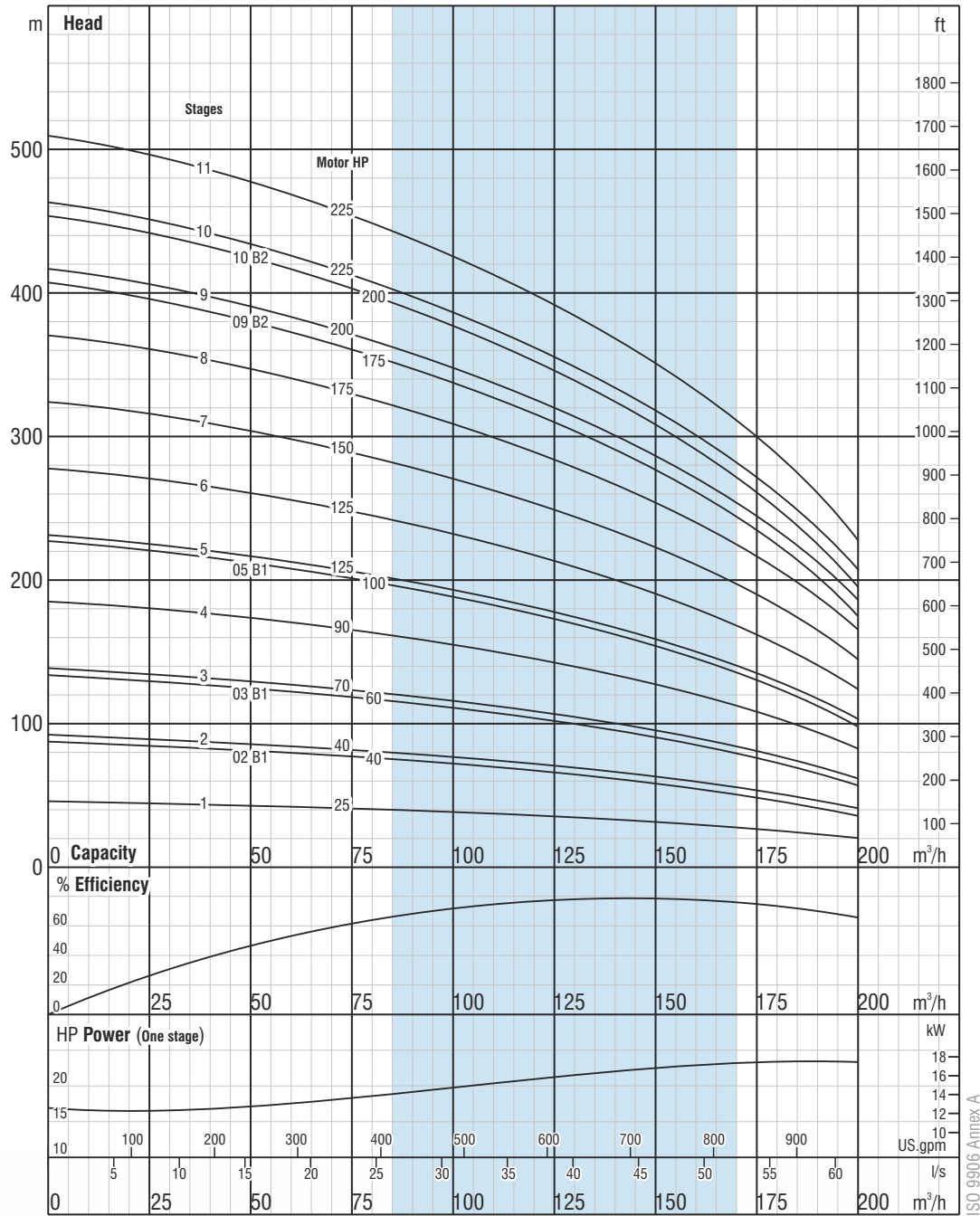
Max. sand content : 50 gr / m³
Valve cap : Stainless steel
Voltage : 460 V (+%6 / -%10)
Frequency : 60 Hz.
Max. water temperature : 50°C
Degree of protection : IP 68



Please contact us for optional materials.

Pump Type	Stages	Motor		Dimensions (mm)					Weight (kg)		
		kW	HP	L	LM	LP	ΦM	ΦP	Motor	Pump	Total
BSP SS 08125/01	1	18,5	25	1659	973	686	142	213	72	32	104
BSP SS 08125/02.B1	2	30	40	2059/1838	1217/996	842	142/192	213	98/120	39	137/159
BSP SS 08125/02	2	30	40	2059/1838	1217/997	842	142/192	213	98/120	39	137/159
BSP SS 08125/03.B1	3	45	60	2344/2113	1347/1116	997	142/192	213	110/138	45	155/183
BSP SS 08125/03	3	52	70	2198	1201	997	192	213	152	45	197
BSP SS 08125/04	4	67	90	2494	1341	1153	192	213	185	52	237
BSP SS 08125/05.B1	5	75	100	2675/2559	1366/1250	1309	192/231	213	186/200	58	244/258
BSP SS 08125/05	5	92	125	2780/2679	1471/1370	1309	192/231	213	210/256	58	268/314
BSP SS 08125/06	6	92	125	2936/2835	1471/1370	1465	192/231	213	210/256	65	275/321
BSP SS 08125/07	7	110	150	3221/3050	1601/1430	1620	192/231	213	235/284	71	306/355
BSP SS 08125/8	8	132	175	3286	1510	1776	231	213	311	78	389
* BSP SS 08125/9.B2	9	132	175	3442	1510	1932	231	213	311	123	434
* BSP SS 08125/9	9	147	200	3542	1610	1932	231	213	338	123	461
* BSP SS 08125/10.B2	10	147	200	3697	1610	2087	231	213	338	132	470
* BSP SS 08125/10	10	166	225	3827	1740	2087	231	213	370	132	502
* BSP SS 08125/11	11	166	225	3983	1740	2243	231	213	370	139	509

Pump Type	Stages	Motor		Current (A)	m ³ /h l/s	Head (m)							
		kW	HP			0	40	120	130	150	160	170	180
BSP SS 08125/01	1	18,5	25	34.5		0,00	11,11	33,33	36,11	41,67	44,44	47,22	50,00
BSP SS 08125/02.B1	2	30	40	53.4/51		46	44	36	35	30	30	29	26
BSP SS 08125/02	2	30	40	53.4/51		89	85	69	67	57	57	53	49
BSP SS 08125/03.B1	3	45	60	82.1/74.8		92	88	73	70	61	61	57	53
BSP SS 08125/03	3	52	70	85.3		135	129	106	102	88	88	82	75
BSP SS 08125/04	4	67	90	111.2		139	132	109	105	91	91	86	79
BSP SS 08125/05.B1	5	75	100	123.1/121.8		185	176	145	140	122	122	114	105
BSP SS 08125/05	5	92	125	152.8/149.4		227	217	178	172	149	149	139	128
BSP SS 08125/06	6	92	125	152.8/149.4		231	220	182	175	152	152	143	132
BSP SS 08125/07	7	110	150	182.6/180.5		277	264	218	210	182	182	171	158
BSP SS 08125/8	8	132	175	207		323	308	254	245	213	213	200	185
* BSP SS 08125/9.B2	9	132	175	207		370	352	291	280	243	243	228	211
* BSP SS 08125/9	9	147	200	236		409	389	320	309	267	267	249	230
* BSP SS 08125/10.B2	10	147	200	236		416	396	327	315	274	274	257	237
* BSP SS 08125/10	10	166	225	266.2		455	434	357	344	297	297	278	256
* BSP SS 08125/11	11	166	225	266.2		462	440	363	350	304	304	285	264
						508	485	400	386	353	334	314	290



Due to continuous improvement in design we reserve the right to amend specifications or data without prior notice.

(01 - 11 STAGES) **BSP SS 08125**

No. of vanes
6

Outlet connection diameter
6" (inside threaded)

Pump outside diameter
226 mm

Rotation
CCW

Revolution
3500 rpm

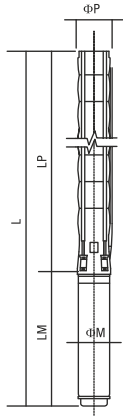
Shaft diameter
25,4 mm



The hydraulic working characteristics have been taken with water at 15 °C, at the atmospheric pressure of 1 bar and specific gravity is 1 gr/cm³

TECHNICAL SPECIFICATIONS

60Hz



Diffuser : Stainless steel (AISI 304L)
Impeller : Stainless steel (AISI 304L)
Pump shaft : Stainless steel (AISI 420)
Coupling : Stainless steel (AISI 420)
Strainer : Stainless steel (AISI 304)
Outlet connection diameter : 6" (inside threaded)

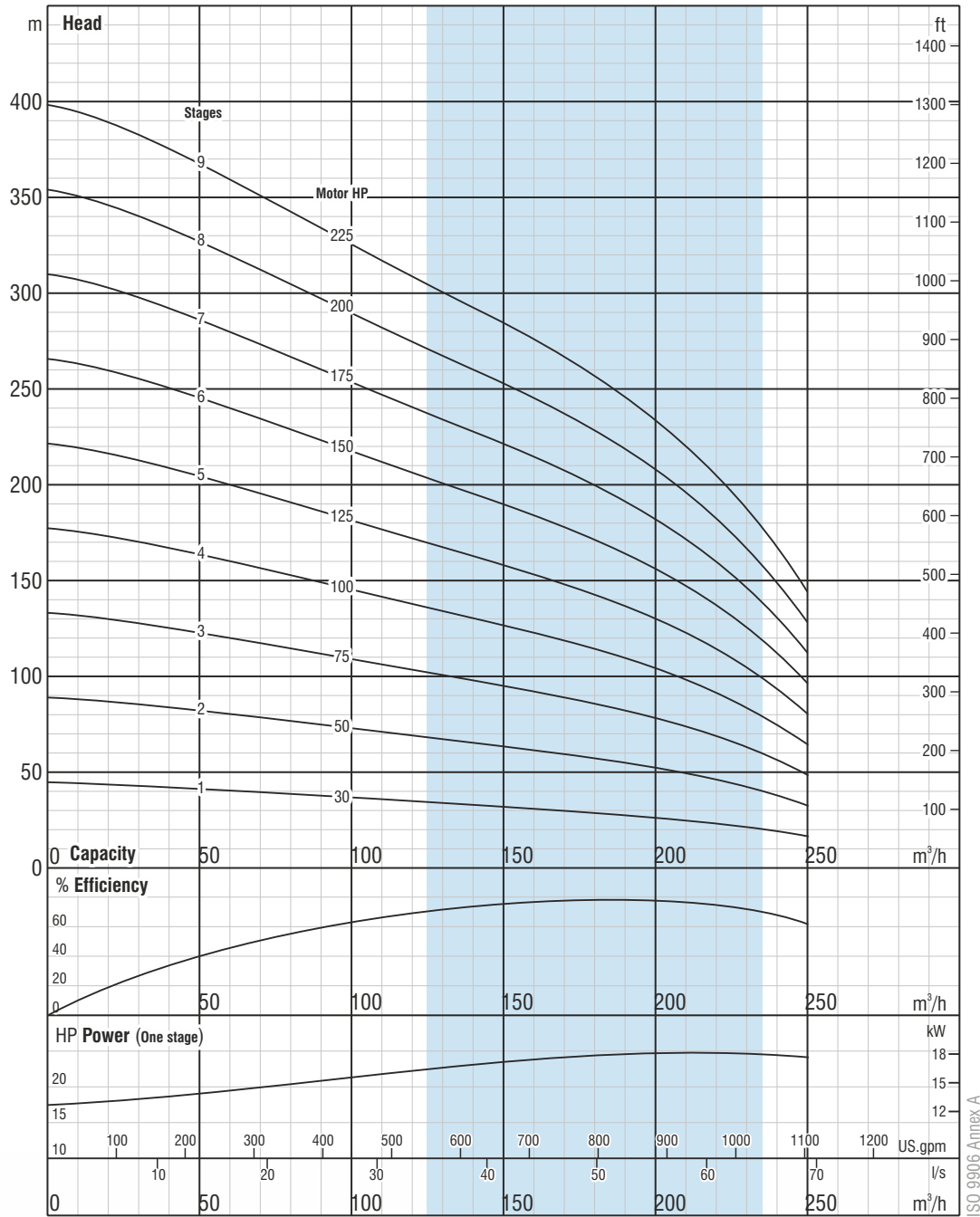
Max. sand content : 50 gr / m³
Valve cap : Stainless steel
Voltage : 460 V (+%6 / -%10)
Frequency : 60 Hz.
Max. water temperature : 50°C
Degree of protection : IP 68



Please contact us for optional materials.

Pump Type	Stages	Motor		Dimensions (mm)					Weight (kg)		
		kW	HP	L	LM	LP	ΦM	ΦP	Motor	Pump	Total
BSP SS 08160/01	1	22	30	1692	1006	686	142	226	76	34	110
BSP SS 08160/02	2	37	50	2089/1898	1247/1056	842	142/192	226	103/129	40	143/169
BSP SS 08160/03	3	55	75	2283	1286	997	192	226	170	47	217
BSP SS 08160/04	4	75	100	2403	1250	1153	231	226	200	53	253
BSP SS 08160/05	5	92	125	2679	1370	1309	231	226	256	60	316
BSP SS 08160/06	6	110	150	2895	1430	1465	231	226	284	66	350
BSP SS 08160/07	7	132	175	3130	1510	1620	231	226	311	73	384
BSP SS 08160/08	8	147	200	3386	1610	1776	231	226	338	79	417
* BSP SS 08160/09	9	166	225	3672	1740	1932	231	226	370	125	495

Pump Type	Stages	Motor		Current (A)	m ³ /h l/s	Head (m)							
		kW	HP			0	50	130	170	190	210	230	250
BSP SS 08160/01	1	22	30	40.1	Head (m)	0,00	13,89	36,11	47,22	52,78	58,33	63,89	69,44
BSP SS 08160/02	2	37	50	66.6/61.4		43	41	33	30	27	24	21	16
BSP SS 08160/03	3	55	75	90.2		86	82	67	59	55	49	41	32
BSP SS 08160/04	4	75	100	121.8		129	122	100	89	82	73	62	48
BSP SS 08160/05	5	92	125	149.4		173	163	133	119	110	98	83	64
BSP SS 08160/06	6	110	150	180.5		216	204	166	148	137	122	103	81
BSP SS 08160/07	7	132	175	207		259	245	200	178	164	147	124	97
BSP SS 08160/08	8	147	200	236		302	286	233	208	192	171	144	113
* BSP SS 08160/09	9	166	225	266.2		345	327	266	237	219	196	165	129



Due to continuous improvement in design we reserve the right to amend specifications or data without prior notice.

ISO 9906 Annex A

(01 - 09 STAGES) **BSP SS 08160**

No. of vanes
6

Outlet connection diameter
5" (inside threaded)

Pump outside diameter
226 mm

Rotation
CCW

Revolution
3500 rpm

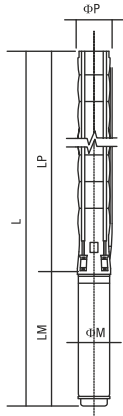
Shaft diameter
25,4 mm



The hydraulic working characteristics have been taken with water at 15 °C, at the atmospheric pressure of 1 bar and specific gravity is 1 gr/cm³

TECHNICAL SPECIFICATIONS

60Hz



Diffuser : Stainless steel (AISI 304L)
Impeller : Stainless steel (AISI 304L)
Pump shaft : Stainless steel (AISI 420)
Coupling : Stainless steel (AISI 420)
Strainer : Stainless steel (AISI 304)
Outlet connection diameter : 6" (inside threaded)

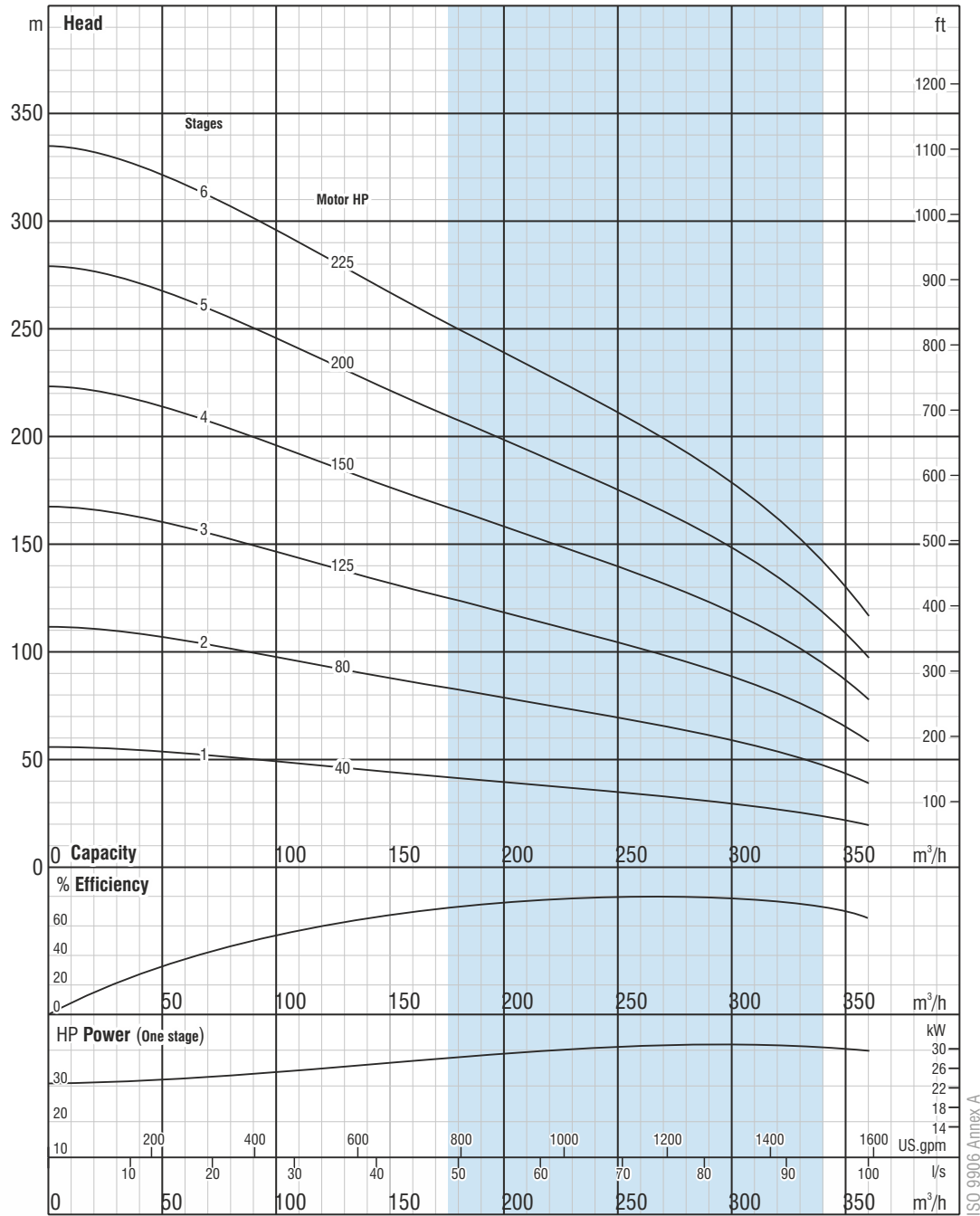
Max. sand content : 50 gr / m³
Valve cap : Stainless steel
Voltage : 460 V (+%6 / -%10)
Frequency : 60 Hz.
Max. water temperature : 50°C
Degree of protection : IP 68



Please contact us for optional materials.

Pump Type	Stages	Motor		Dimensions (mm)					Weight (kg)		
		kW	HP	L	LM	LP	ΦM	ΦP	Motor	Pump	Total
BSP SS 10210/01	1	30	40	2011/1790	1217/996	794	142/192	247	98/120	44	142/164
BSP SS 10210/02	2	60	80	2256	1286	970	192	247	170	55	225
BSP SS 10210/03	3	92	125	2618/2517	1471/1370	1147	192/231	247	210/256	66	276/322
BSP SS 10210/04	4	110	150	2924/2753	1601/1430	1323	192/231	247	235/284	76	311/360
BSP SS 10210/05	5	147	200	3109	1610	1499	231	247	338	87	425
* BSP SS 10210/06	6	166	225	3415	1740	1675	231	247	370	141	511

Pump Type	Stages	Motor		Current (A)	m ³ /h l/s	Head (m)								
		kW	HP			0	100	220	240	260	280	300	320	360
BSP SS 10210/01	1	30	40	53.4/51	Head (m)	0,00	27,78	61,11	66,67	72,22	77,78	83,33	88,89	100,00
BSP SS 10210/02	2	60	80	99.6		56	49	38	36	34	32	30	27	19
BSP SS 10210/03	3	92	125	152.8/149.4		111	99	76	72	68	64	60	54	39
BSP SS 10210/04	4	110	150	182.6/180.5		167	148	113	108	102	97	90	81	58
BSP SS 10210/05	5	147	200	236		222	197	151	144	137	129	120	108	78
* BSP SS 10210/06	6	166	225	266.2		278	246	189	180	171	161	150	135	97



Due to continuous improvement in design we reserve the right to amend specifications or data without prior notice.

ISO 9906 Annex A

(01 - 06 STAGES) BSP SS 010210

No. of vanes
6

Outlet connection diameter
6" (inside threaded)

Pump outside diameter
247 mm

Rotation
CCW

Revolution
3500 rpm

Shaft diameter
47,86 mm



