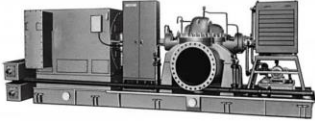


API 610 PROCESS PUMP

PUMP MODEL **CP**

Catalog No. CP1001E*



Design Near Centerline support, Axial split
Double Volute casing
Double suction impeller
Full compliance with API 610
Max. Parts Interchangeability
Low NPSH performance

Application Pipeline, Crude Oil Transfer
Petroleum Refinery
Petrochemical Industry
Other Industries

Rating	
Capacity	upto 5500 m ³ /h (24200 U.S.gpm)
Head	upto 550 m (1800 ft)
Temperature	upto +205°C (+400°F)
Flange Rating	ASME Class 300 lb as standard Others are also available

CP
SPL

API 610 PROCESS PUMP

PUMP MODEL **KS**

Catalog No. CS1060E*



Design Centerline support, Radial split
Double Volute casing
Double suction impeller
Full compliance with API 610
Full Out Design of rotating assembly
Low NPSH performance

Application Petroleum Refinery
Petrochemical Industry
Chemical Industry
Other Industries

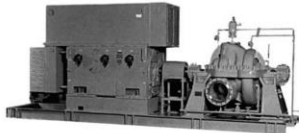
Rating	
Capacity	upto 5500 m ³ /h (24200 U.S.gpm)
Head	upto 550 m (1800 ft)
Temperature	-100°C ~ +450°C (-150°F ~ +850°F)
Flange Rating	ASME Class 300 lb as standard Others are also available

KS
R2,R2D

API 610 PROCESS PUMP

PUMP MODEL **SPL**

Catalog No. CS1050E*



Design Near Centerline support, Axial split
Two stage
Single or Double Volute casing
Opposed impeller arrangement
Full compliance with API 610

Application Pipeline, Crude Oil Transfer
Petroleum Refinery
Petrochemical Industry
Other Industries

Rating	
Capacity	upto 1140 m ³ /h (5020 U.S.gpm)
Head	upto 375 m (1230 ft)
Temperature	upto +205°C (+400°F)
Flange Rating	ASME Class 300 lb as standard Others are also available

API 610 PROCESS PUMP

PUMP MODEL **R2, R2D**

Catalog No. CS1330E*



Design Centerline support, Radial split
Two stage
Single or Double Volute casing
Opposed impeller arrangement
Double suction 1st impeller for R2D
Full compliance with API 610
Low NPSH performance for R2D

Application Petroleum Refinery
Petrochemical Industry
Chemical Industry
Other Industries

Rating	
Capacity	upto 1500 m ³ /h (6600 U.S.gpm)
Head	upto 520 m (1700 ft)
Temperature	-100°C ~ +450°C (-150°F ~ +850°F)
Flange Rating	ASME Class 300 lb as a standard Others are also available