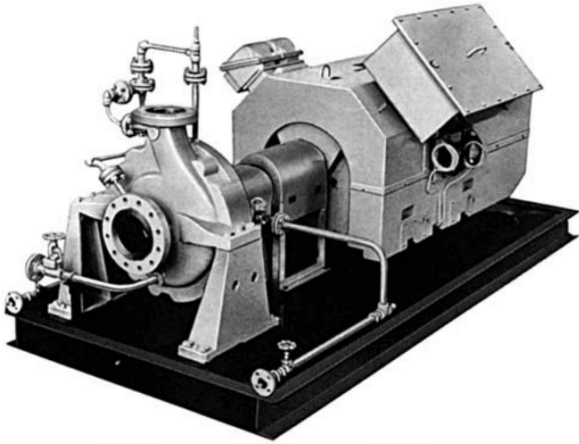


API 610 PROCESS PUMP

PUMP MODEL **UCS**



Design

Centerline support, Radial split
Single or Double Volute Casing
Open Impeller,
Full Compliance with API 610
Back Pull Out design
Center top discharge (Self-venting)
Max. Parts Interchangeability

Application

Petroleum Refinery
Petrochemical Industry
Chemical Industry
Other Industries

Rating	
Capacity	upto 720 m ³ /h (3200 U.S.gpm)
Head	upto 135 m (450 ft)
Temperature	-100°C ~ + 450°C (-15°F ~ + 850°F)
Flange Rating	ASME Class 300 lb as standard Others are also available